

40

PRODUKTY DOSTĘPNE W PONAD 40 KRAJACH
PRODUCTS AVAILABLE IN OVER 40 COUNTRIES
PRODUKTE IN MEHR ALS 40 LÄNDERN ERHÄLTICH

12.500

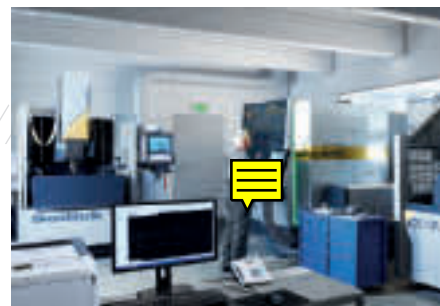
PRODUKTÓW W ASORTYMENCIE
PRODUCTS IN THE OFFER
PRODUKTE IM SORTIMENT

1.130

KLIENTÓW
CUSTOMERS
KUNDEN

45

PRODUKTY W 45 SIECIACH DIY
PRODUCTS OFFERED IN 45 DIY CHAINS
PRODUKTE IN 45 DIY-MARKTKETTEN



logistics

Centrum logistyczne o powierzchni 10.000 m² gwarantuje sprawny wysyłkę towarów. Logistykę na terenie Europy realizujemy własną flotą transportową.

Our 10.000 m² logistics centre guarantees efficient dispatch of goods. Logistics within Europe are handled by our own transport fleet.

Ein Logistikzentrum mit einer Fläche von 10.000 m² garantiert den effizienten Warenversand. Die Logistik innerhalb Europas Wir realisieren unsere eigenen Transportflotte.



Wywodzimy się z Elk, jednego z najczystszych regionów Europy. Czujemy się odpowiedzialni za dziedzictwo przyrodnicze i przyszłość regionu. Tworzymy nasze produkty zgodnie z zasadami zrównoważonego rozwoju. Z biegiem lat udoskonalamy proces produkcji, zwiększając ilość składników mineralnych w produktach i zwiększamy wykorzystanie surowców z recyklingu.

We hail from Elk, a city located in one of the cleanest regions in Europe. We feel responsibility for the natural heritage and the future of the region. Our products are created in accordance with the principles of sustainability in mind. Over the years, we have been improving the production process, increasing the amount of minerals in the products and increasing the use of recycled raw materials.

Wir kommen aus Elk, einer der saubersten Regionen in Europa. Deshalb wir fühlen uns verantwortlich für Natur und die Zukunft der Region. Wir stellen unsere Produkte nach den Grundsätzen der Nachhaltigkeit her. Im Laufe der Jahre haben wir den Produktionsprozess verbessert, den Anteil an Mineralien in den Produkten erhöht und den Einsatz von recycelten Rohstoffen steigert.

design lab

Cezar od zawsze stawia na innowację. Design Lab to zespół designerów i konstruktorów projektujących nowe produkty oraz sposoby ich wytwarzania.

Cezar has always relied on innovation. Our Design Lab is a team of designers and developers who design new products and ways of making them.

Cezar hat schon immer auf Innovation gesetzt. Das Design Lab besteht aus einem Designern und Konstrukteure, das neue Produkte und Methoden zu ihrer Herstellung.

36.000

(m²) POWIERZCHNI UŻYTKOWEJ
(m²) OF USABLE FLOOR AREA
(m²) NUTZFLÄCHE



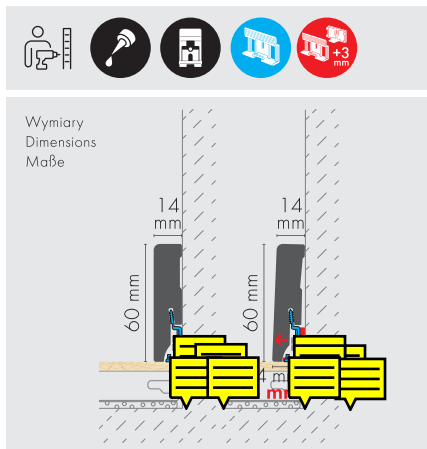
JAKOŚĆ POTWIERDZONA CERTYFIKATAMI
QUALITY PROVEN WITH CERTIFICATES
ZERTIFIZIERTE QUALITÄT



ZAPOZNAJ SIĘ Z OZNACZENIAMI W KATALOGU PLEASE SEE THE SYMBOLS IN THE CATALOGUE BEACHTEN SICH MIT MIT DIE SYMBOLEN DES KATALOGS



WYMIARY I SPOSOBY MONTAŻU DIMENSIONS AND ASSEMBLY INSTRUCTIONS ERSETZUNG UND MONTAGEMETHODE



- Kod QR - szczegółowa instrukcja montażu
QR code - detailed assembly instructions
QR-Code- ausführliche Montageanleitung
- Polistyren ekstrudowany
Extruded polystyrene
Extrudierter Polystyrol-Hartschaum
- Poliuretan
Polyurethane
Polyurethan
- Kanał do taśm Led
LED strip channel
Profil für Led Streifen
- Okleina ze strukturą drewna
Wood-textured laminate
Holzstruktur-Laminat
- Produkt z technologią **LIGHTBLOCKER®**
Product with **LIGHTBLOCKER®** technology
Produkt mit **LIGHTBLOCKER®** - Technologie



- Profil do wyginania
A profile for bending
Biegeprofil

SYMBOLE LOGISTYCZNE LOGISTICS SYMBOLS LOGISTISCHE SYMBOLE

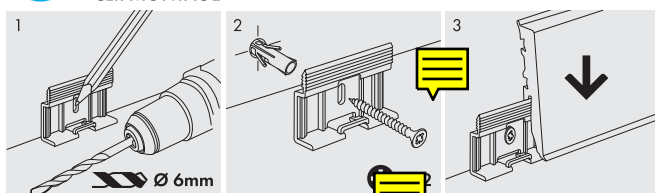
- Kolor lub deseń produktu
Product colour or design
Produktfarbe oder - design
- Efekt wykończenia produktu
Effect of the product finish
Oberflächenfinish-Effekt
- Ilość w opakowaniu zbiorczym
Quantity per bulk package
Menge pro Sammelverpackung

- Numer katalogowy
Catalogue number
Katalognummer
- Długość produktu
Product length
Produktlänge
- Wymiary produktu
Product dimensions
Produktmaße

- Produkt do malowania
Paintable product
Überstreichbares Produkt
- Gotowy produkt — nie wymaga malowania.
Ready to use — no painting required.
Gebrauchsfertig — kein Anstrich erforderlich.
- Pojemność produktu
Product capacity
Produktkapazität
- Masa produktu
Product weight
Produktgewicht

ZAPOZNAJ SIĘ ZE SPOSOBAMI MONTAŻU FAMILIARIZE YOURSELF WITH THE INSTALLATION METHODS MACHEN SIE SICH MIT DEN ONTAGEVERFAHREN VERTRAUT

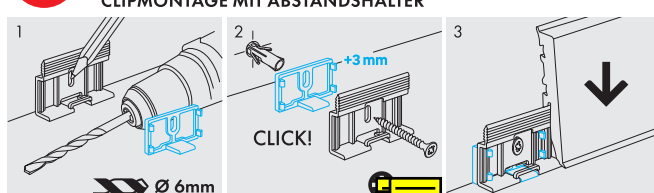
MONTAŻ NA KLIPS LISTEW LPC-50, LPC-51, LPC-52 CLIP-ON INSTALLATION LPC-50, LPC-51, LPC-52 SKIRTING BOARDS CLIPMONTAGE



1 Przykręć klips do ściany wkrętem./ Install the clip on the wall with a screw./ Den Clip mit einer Schraube an der Wand befestigen.

2 Nałóż na klips listwę i dociśnij./ Place the skirting board in the clip and press down./ Die Leiste auf den Clip setzen und andrücken.

MONTAŻ NA KLIPS Z PODKŁADKĄ DYSTANSOWĄ CLIP-ON INSTALLATION WITH SPACER CLIPMONTAGE MIT ABSTANDSHALTER

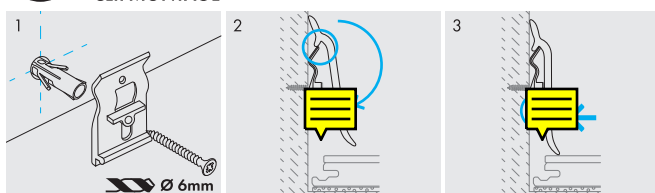


1 Włóż podkładkę do klipsa./ Insert the spacer into the clip./ Den Abstandshalter in den Clip einsetzen.

2 Przykręć klips z podkładką do ściany wkrętem./ Install the clip with spacer to the wall with a screw./ Den Clip mit Abstandshalter mit einer Schraube an der Wand befestigen.

3 Nałóż na klips listwę i dociśnij./ Place the skirting board in the clip and press down./ Die Leiste auf den Clip setzen und andrücken.

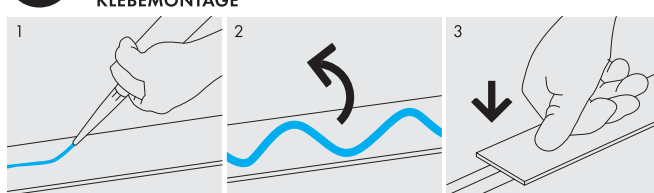
MONTAŻ NA KLIPS LISTWY LPC-16 CLIP-ON INSTALLATION LPC-16 SKIRTING BOARD CLIPMONTAGE



1 Przykręć klips do ściany wkrętem./ Install the clip on the wall with a screw./ Den Clip mit einer Schraube an der Wand befestigen.

2 Nałóż na klips listwę i dociśnij./ Place the skirting board in the clip and press down./ Die Leiste auf den Clip setzen und andrücken.

MONTAŻ NA KLEJ ADHESIVE INSTALLATION KLEBEMONTAGE



1 Nałóż klej montażowy z tyłu listwy./ Apply the assembly adhesive to the back of the trim./ Den Montagekleber auf der Rückseite der Leiste auftragen.

2 Odwróć listwę i przyłóż ją do podłoża./ Turn the trim over and apply it to the substrate./ Die Leiste umdrehen und auf den Untergrund legen.

3 Mocno dociśnij./ Press down firmly./ Fest andrücken.

WARUNKI UŻYTKOWANIA PRODUKTÓW

CONDITIONS OF USE OF THE PRODUCTS

VERWENDUNGSBEDINGUNGEN FÜR DIE PRODUKTE

W trosce o Twoje zdrowie, bezpieczeństwo oraz długą żywotność produktów firmy Cezar przygotowaliśmy ogólne porady dotyczące montażu i użytkowania naszych wyrobów. W szczególności należy pamiętać, że:

For the sake of your health, safety and the long life of products by Cezar, we have prepared general advice on the installation and use of our products. In particular, remember the following:

Im Interesse Ihrer Gesundheit, Ihrer Sicherheit und der Langlebigkeit der Produkte von Cezar haben wir allgemeine Hinweise für die Montage und den Gebrauch unserer Produkte zusammengestellt. Dabei ist insbesondere Folgendes zu beachten:

- elementy wykończeniowe (listwy PVC, profile aluminiowe i mosiężne ze stali nierdzewnej) należy chronić przed zabrudzeniem materiałami mokrymi (beton, zaprawa, klej, fugi do płytek itp.) stosowanymi w przemyśle budowlanym, np.: w przypadku zabrudzenia należy niezwłocznie zmyć zanieczyszczenie czystą wodą,
- do przycinania profili metalowych nie stosować narzędzi mogących spowodować przegrzanie się materiału,
- do czyszczenia elementów metalowych nie należy stosować środków zawierających chlor lub inne substancje żrące,
- do montażu profili metalowych stosować tylko kleje montażowe i silikony neutralne chemicznie,
- do czyszczenia elementów z tworzyw sztucznych nie należy używać żadnych materiałów czyszczących zawierających rozpuszczalniki,
- elementy na których pozostały reszki etykiet, metek cenowych czy taśm należy zmyć szmatką nasączoną denaturatem,
- przed układaniem podkładów pod panele podłogowe posadzka powinna być oczyszczona i zabezpieczona przed wilgocią folią PE,
- do konserwacji podłóg drewnianych, drewnopochodnych, paneli ściennych oraz parapetów należy używać środków czyszczących przyjaznych dla środowiska naturalnego i nie wchodzących w reakcję z laminatem pokrywającym ich powierzchnię,
- do czyszczenia powierzchni trzeba stosować tkaninę o wysokim współczynniku pochłaniania wilgoci.

- finishing elements (PVC strips, aluminium and brass stainless steel profiles) must be protected from contamination with wet materials, such as concrete, mortar, adhesive, tile grout, etc. used in the construction industry, for example in the event of contamination, the contamination must be washed off immediately with clean water,
- do not use tools that could overheat the material when cutting metal profiles,
- do not use agents containing chlorine or other corrosive substances to clean metal parts,
- use only chemically neutral mounting adhesives and silicones for installation of metal profiles,
- do not use any cleaning materials containing solvents to clean plastic parts,
- any parts with residues of labels, price tags or tapes should be washed off with a cloth soaked in denatured alcohol,
- the floor for laying laminate flooring underlay should be cleaned and protected against moisture with a PE film before laying the underlay,
- for maintenance of wooden and wood-based floors, wall panels and window sills, use environmentally friendly cleaning agents and do not react with the laminate flooring,
- use a fabric with a high moisture-absorbing capacity to clean the surface.

- Veredelungselemente (PVC-Leisten, Aluminium- und Messingprofile aus rostfreiem Stahl) müssen vor Verunreinigung geschützt werden durch: Beton, Mörtel, Kleber, Fugenmörtel die in der Bauindustrie verwendet werden. Im Falle einer Verunreinigung muss diese sofort mit sauberem Wasser abgewaschen werden.
- Beim Schneiden von Metallprofilen keine Werkzeuge verwenden, die das Material überhitzen können,
- Chlorhaltige Mittel oder andere ätzende Stoffe sollten nicht zur Reinigung von Metallteilen verwendet werden.
- Für die Montage von Metallprofilen nur chemisch neutrale Montagekleber und Silikone verwenden.
- Zur Reinigung von Kunststoffteilen dürfen keine lösungsmittelhaltigen Reinigungsmittel verwendet werden.
- Eventuelle Rückstände von Etiketten, Preisschildern oder Klebebandern sollten mit einem in denaturiertem Alkohol getränkten Tuch abgewaschen werden.
- Der Boden sollte gereinigt und mit PE-Folie vor Feuchtigkeit geschützt werden, bevor die Unterlage für die Bodenplatten verlegt wird.
- Für die Pflege von Holz- und Holzwerkstoffböden, Wandplatten und Fensterbänken sind umweltfreundliche Reinigungsmittel zu verwenden, die nicht mit dem Laminat reagieren, das die Oberfläche bedeckt.
- Zur Reinigung der Oberfläche muss ein Gewebe mit hoher Feuchtigkeitsaufnahme-fähigkeit verwendet werden.

Pamiętaj, aby wszelkie prace budowlane były wykonywane przez wykwalifikowanych pracowników, którzy respektują przepisy prawa budowlanego. Producent nie ponosi odpowiedzialności za wyroby, które zostały użyte niezgodnie z przeznaczeniem, lub uległy uszkodzeniu w trakcie nieprawidłowego montażu.

Remember to make sure that any construction work is carried out by qualified workers who respect building regulations. The manufacturer shall not be held liable for the products which have been used other than for their intended purpose or damaged during improper installation.

Achten Sie darauf, dass alle Bauarbeiten von qualifizierten Arbeitskräften ausgeführt werden, die die Bauvorschriften einhalten. Der Hersteller haftet nicht für Produkte, die nicht bestimmungsgemäß verwendet wurden oder bei unsachgemäßer Installation beschädigt wurden.

! W czasie wykonywania pracy należy stosować się do ogólnych zasad bezpieczeństwa i higieny pracy. Uchroni to przed nieprzyjemnymi urazami oraz zapewni odpowiedni poziom bezpieczeństwa i pewny montaż!

! Observe the general EHS rules when carrying out work. This could protect you from injuries and ensure adequate safety and secure installation!

! Bei der Durchführung der Arbeiten müssen die allgemeinen Gesundheits- und Sicherheitsvorschriften eingehalten werden. So schützen Sie sich vor unangenehmen Verletzungen und sorgen für ausreichende Sicherheit und einen sicheren Einbau!

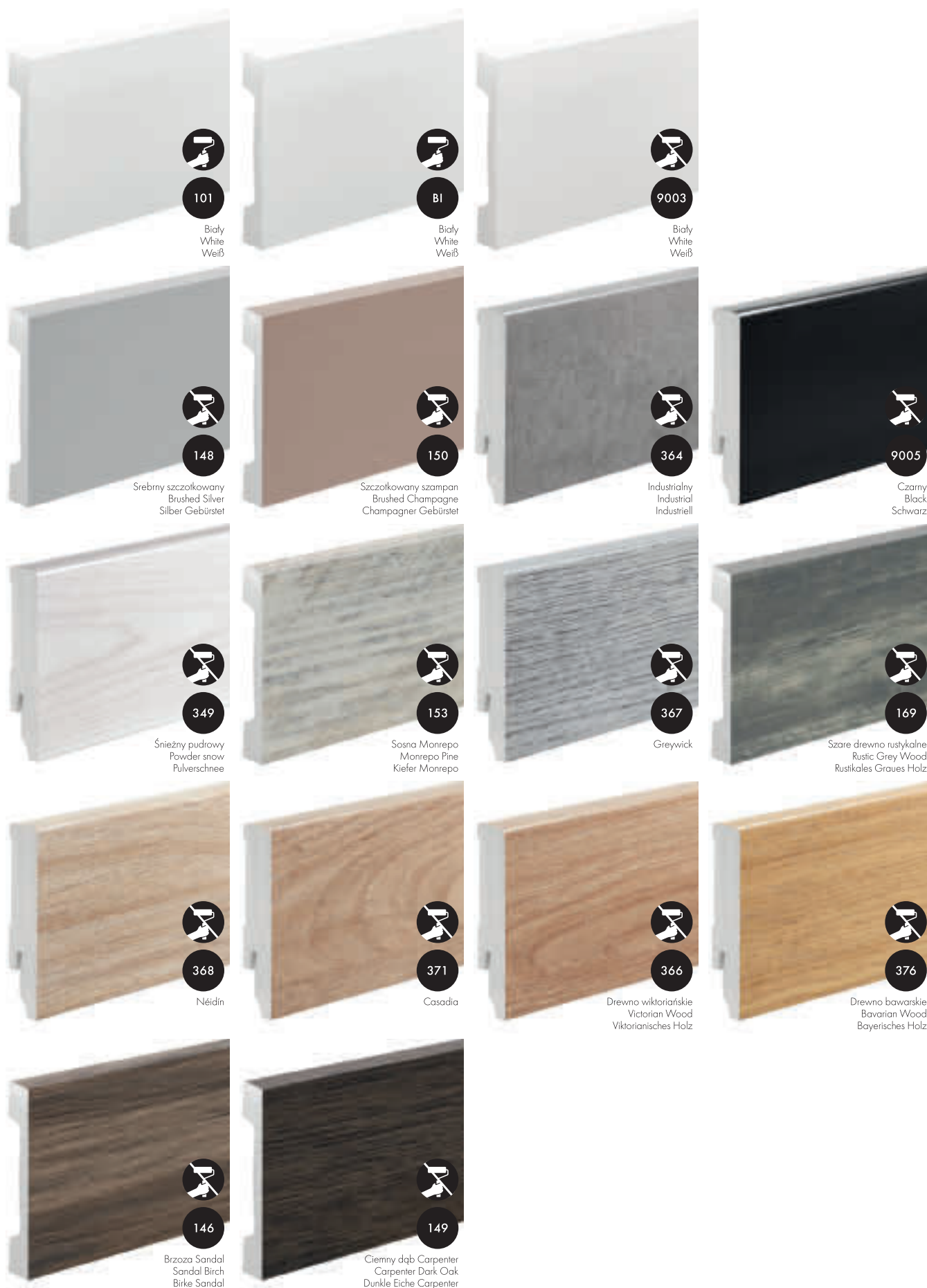
i Kolor wyrobu z różnych partii produkcyjnych może nieznacznie różnić się między sobą odcieniem.

i The colour of the products from different production batches may vary slightly in shade.

i Leichte Farbabweichungen zwischen den Produktionschargen sind möglich.



KOLORYSTKA PRODUKTÓW COLOURS OF PRODUCTS PRODUKTFARBGEBUNG

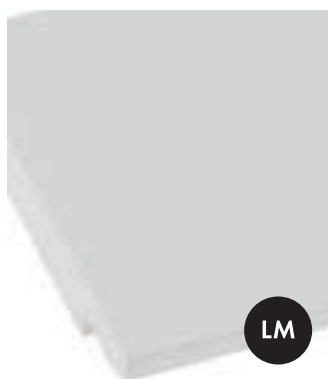




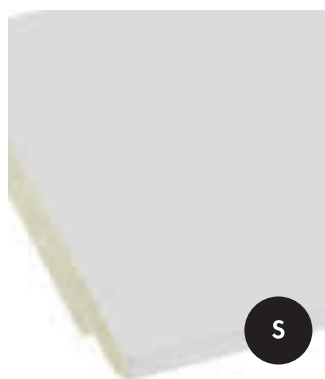
EFEKT WYKOŃCZENIA PRODUKTÓW TYPES OF PRODUCT FINISHES OBERFLÄCHENFINISH DER PRODUKTE



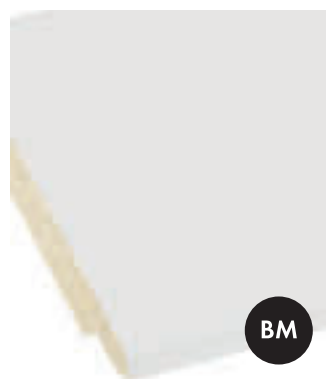
Lakier satynowy
Satin lacquer
Lack satiniert



Lakier matowy
Matt lacquer
Matlackierung



Wykończenie surowe
Raw finish
Rohe Oberfläche



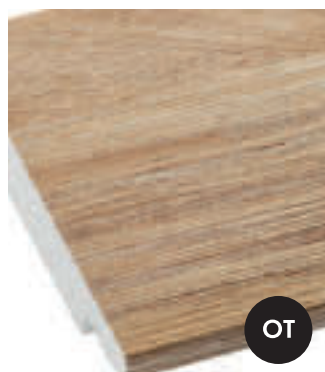
Produkt barwiony w masie - matowy
Full body coloured product - matt
Einfarbiges Produkt - matt



Folia matowa
Matt foil
Folie matt



Folia połysk
Gloss foil
Folie glänzend



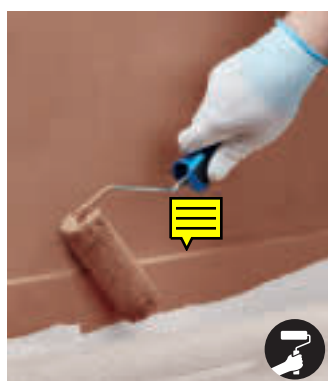
Okleina półmat
Foil with wood structure
Folie mit Holzstruktur



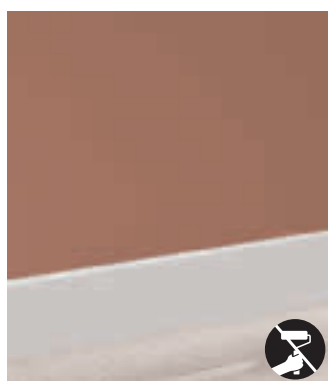
OPCJE MALOWANIA PRODUKTÓW PAINTING OPTIONS LACKIEROPTIONEN FÜR PRODUKTE



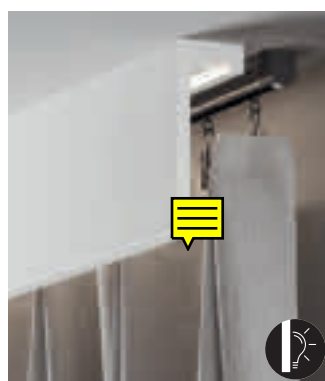
LIGHTBLOCKER®



Produkt można malować razem ze ścianą lub sufitem na dowolny kolor farbami akrylowymi lub lateksowymi. The product can be painted together with the wall or ceiling in any colour using acrylic or latex paints. Das Produkt kann zusammen mit der Wand oder der Decke in jeder beliebigen Farbe mit Acryl- oder Latexfarben gestrichen werden.



Gotowy produkt — nie wymaga malowania. Ready to use — no painting required. Gebrauchsfertig — kein Anstrich erforderlich.



Produkt z technologią **LIGHTBLOCKER®** — warstwą uniemożliwiającą przenikanie światła przez produkt. Product with **LIGHTBLOCKER®** technology — a light-blocking layer that prevents light from passing through the product. Produkt mit **LIGHTBLOCKER®**-Technologie — eine lichtsperrende Schicht, die das Durchscheinen von Licht durch das Produkt verhindert.



Produkt bez technologii **LIGHTBLOCKER®** — światło przenika przez listwę. Product without **LIGHTBLOCKER®** technology — light can pass through the moulding. Produkt ohne **LIGHTBLOCKER®**-Technologie — Licht kann durch die Leiste hindurchscheinen.



9

LISTWY PRZYPODŁOGOWE
SKIRTING BOARDS
SOCKELLEISTEN



92

NISZE
NICHES
NISCHEN



21

LISTWY GZYMSOWE
CORNICER MOULDINGS
GESIMSLEISTEN



92

WSPORNIKI
BRACKETS
STUCKKONSOLEN



44

LISTWY OŚWIETLENIOWE
LIGHTING MOULDINGS
LICHTLEISTEN



92

DEKORACJE
DECORATIONS
DEKORATIONEN



48

LISTWY KARNISZOWE
CURTAIN MOULDINGS
GARDINENLEISTE



94

KOLUMNY
COLUMNS
DECORSÄULEN



51

LISTWY NAŚCIENNE
WALL MOULDINGS
WANDLEISTEN



96

AKCESORIA MONTAŻOWE
INSTALLATION ACCESSORIES
MONTAGEZUBEHÖR



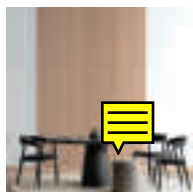
66

NAROŻNIKI DO LISTEW NAŚCIENNYCH
WALL CORNER MOULDINGS
DEKORATIVE ECKSTÜCKE FÜR WANDLEISTEN



97

EKSPOZYTORY
DISPLAYS
VERKAUFSDISPLAYS



68

PANELE ŚCIENNE
WALL PANELS
WANDPANELEE



86

OBRAMOWANIA DRZWI I OKIEN
DOOR AND WINDOW FRAMES
TÜREN UND FENSTERRAHMEN



90

DEKORACJE SUFITOWE
CEILING ORNAMENTS
DECKENDEKORATIONEN



LNG-22

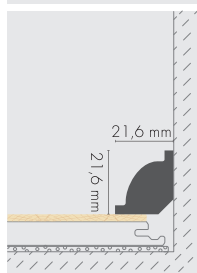


LISTWY PRZYPODŁOGOWE SKIRTING BOARDS SOCKELLEISTEN

LPC-24/ 101



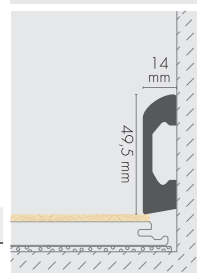
LPC-01 XPS



	101	LM	2,44 m	898914	90
LPC-01		9003	LS	2,44 m	862342 90



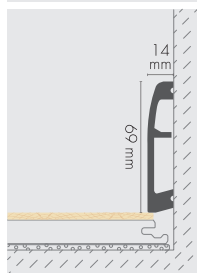
LPC-04 XPS



	101	LM	2,44 m	898945	40
LPC-04		9003	LS	2,44 m	862359 40



LPC-06 XPS

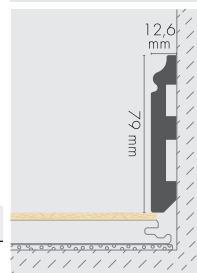


	101	LM	2,44 m	898969	30
LPC-06		9003	LS	2,44 m	862366 30
		148	FP	2,44 m	898976** 30
		150	FP	2,44 m	898983 30

** Na zamówienie/ On request/ Auf Anfrage *** Outlet



LPC-07 XPS

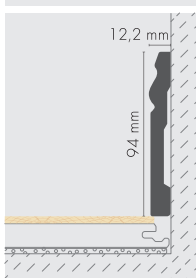


	101	LM	2,44 m	898990	25
LPC-07		9003	LS	2,44 m	862373 25

(LM) Lakier matowy podkład/ Matt lacquer primer/ Matte Lackgrundierung, (LS) Lakier satynowy/ Satin lacquer/ Lack satiniert, (FP) Folia polysk/ Glass foil/ Folie glänzend, (FM) Folia matowa/ Matt foil/ Folie matt



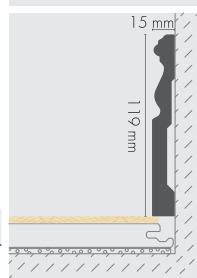
LPC-08 XPS



	101	LM	2,44 m	899003	23	
LPC-08	9003	LS	2,44 m	862380	23	



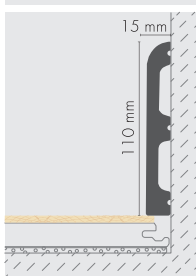
LPC-09 XPS



	101	LM	2,44 m	899010	16	
LPC-09	9003	LS	2,44 m	862397	16	



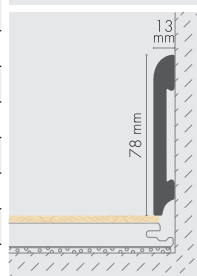
LPC-10 XPS



	101	LM	2,44 m	654060	16	
LPC-10	9003	LS	2,44 m	654053	16	



LPC-11 XPS

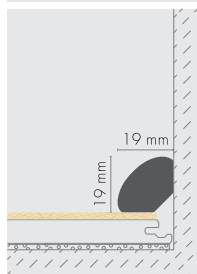


	101	LM	2,44 m	899027	28	
	9003	LS	2,44 m	862403	28	
	146	FM	2,44 m	661679**	28	
	148	FP	2,44 m	899034	28	
	149	FM	2,44 m	661686**	28	
	150	FP	2,44 m	899041	28	
	153	FM	2,44 m	661716	28	
	169	FM	2,44 m	668326**	28	
LPC-11						

** Na zamówienie/ On request/ Auf Anfrage



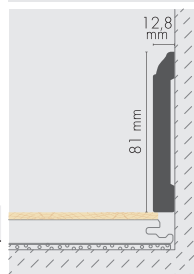
LPC-12 XPS



LPC-12	101	LM	2,44 m	899058	100
--------	-----	----	--------	--------	-----



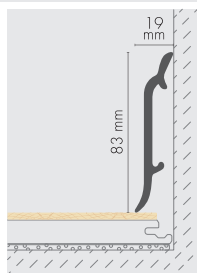
LPC-15 XPS



LPC-15	101	LM	2,44 m	899089	29
	9003	LS	2,44 m	862427	29



LPC-16 XPS



LPC-16	101	LM	2,44 m	899096	27
--------	-----	----	--------	--------	----



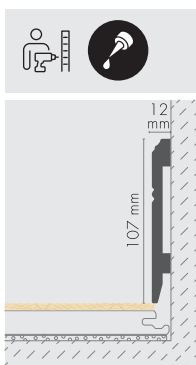
KLIPS MONTAŻOWY INSTALLATION CLIPS MONTAGECLIP

LPC-16

899102	5000
--------	------



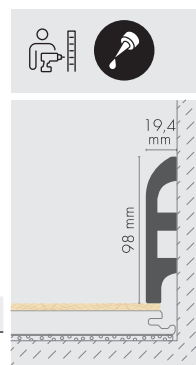
LPC-18 XPS



LPC-18	101	LM	2,44 m	899119	25	
	9003	LS	2,44 m	862441	25	



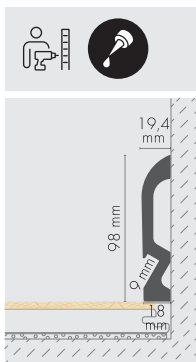
LPC-19 XPS



LPC-19	101	LM	2,44 m	899126	16	
	9003	LS	2,44 m	862458	16	



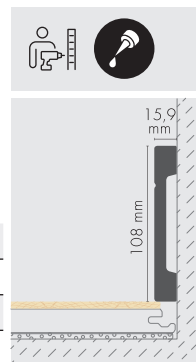
LPC-19LE XPS



LPC-19LE	101	LM	2,44 m	654978	16	



LPC-20 XPS



LPC-20	101	LM	2,44 m	899133	15	
	9003	LS	2,44 m	862465	15	
	148	FP	2,44 m	899140	15	
	150	FP	2,44 m	899157	15	

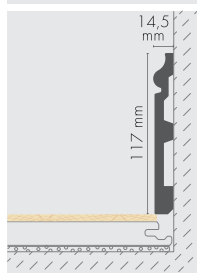


LPC-22 XPS



101	LM	2,44 m	899171	16	
9003	LS	2,44 m	862472	16	

LPC-22



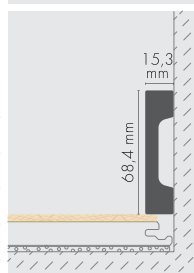
LPC-23 XPS



101	LM	2,44 m	899188	27	
9003	LS	2,44 m	862489	27	
148	FP	2,44 m	899195	27	
150	FP	2,00 m	863868**	27	
150	FP	2,44 m	899201	27	

LPC-23

** Na zamówienie/ On request/ Auf Anfrage

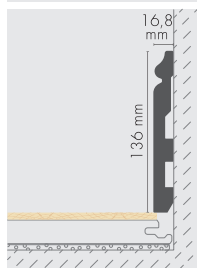


LPC-24 XPS



101	LM	2,44 m	899218	12	
9003	LS	2,44 m	862496	12	

LPC-24

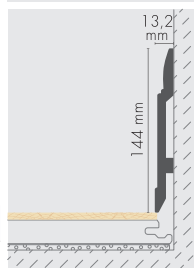


LPC-25 XPS



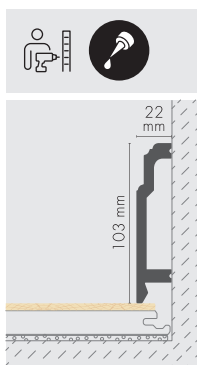
101	LM	2,44 m	899225	15	
9003	LS	2,44 m	862502	15	

LPC-25





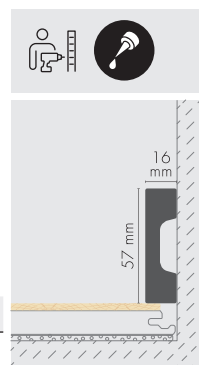
LPC-26 XPS



LPC-26	101	LM	2,44 m	899232	14
--------	-----	----	--------	--------	----



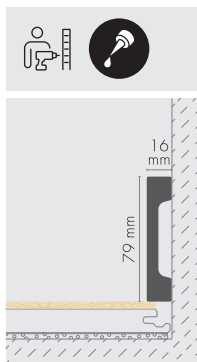
LPC-27 XPS



LPC-27	101	LM	2,44 m	863110	30
	9003	LS	2,44 m	863141	30



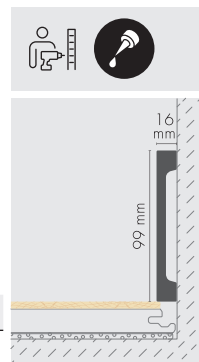
LPC-28 XPS



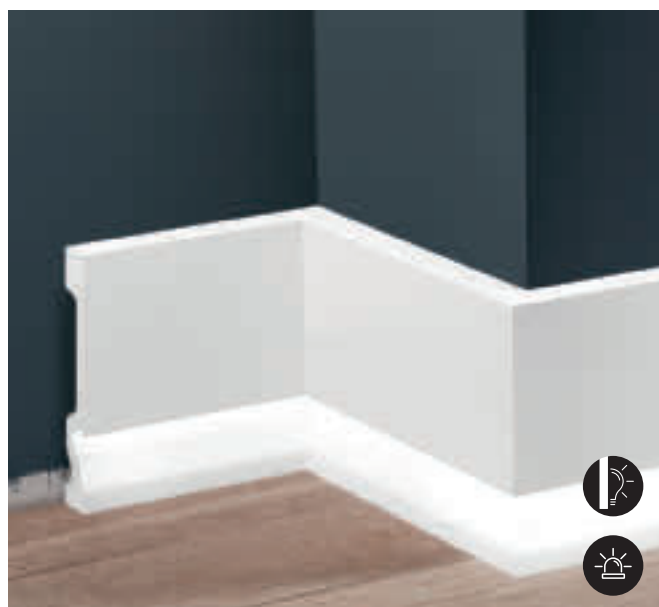
LPC-28	101	LM	2,44 m	863127	23
	9003	LS	2,44 m	863158	23



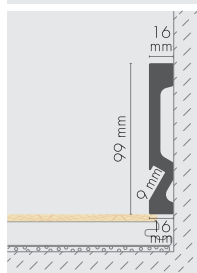
LPC-29 XPS



LPC-29	101	LM	2,44 m	863219	18
	9003	LS	2,44 m	863226	18



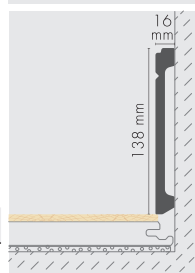
LPC-29LE XPS



LPC-29LE						
	101	LM	2,44 m	863608	18	



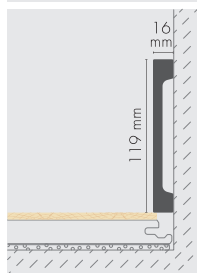
LPC-30 XPS



LPC-30						
	101	LM	2,44 m	863271	14	
	9003	LS	2,44 m	863288	14	



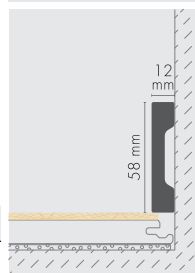
LPC-31 XPS



LPC-31						
	101	LM	2,44 m	863608	15	
	9003	LS	2,44 m	863622	15	



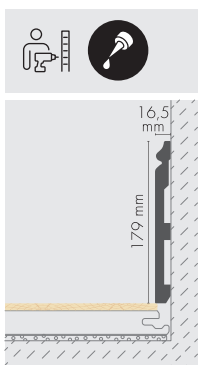
LPC-32 XPS



LPC-32						
	101	LM	2,44 m	617324	42	
	9003	LS	2,44 m	617331	42	



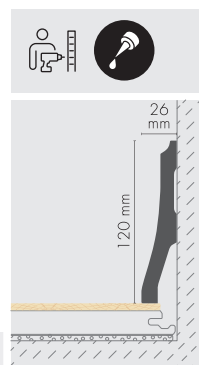
LPC-33 XPS



LPC-33					
	101	LM	2,44 m	843721	10



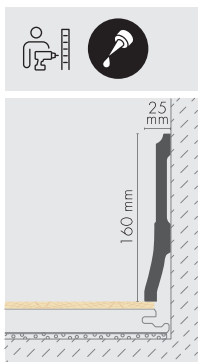
LPC-34 XPS



LPC-34					
	101	LM	2,44 m	611094	14



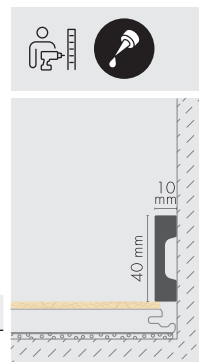
LPC-35 XPS



LPC-35					
	101	LM	2,44 m	611155	12



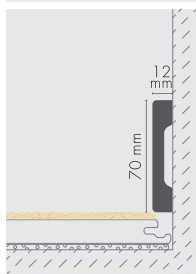
LPC-36 XPS



LPC-36					
	101	LM	2,44 m	602597	70
	9003	LS	2,44 m	602603	70



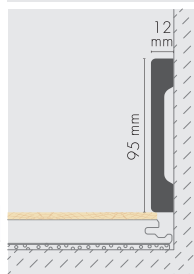
LPC-37 XPS



LPC-37	101	LM	2,44 m	611407	33	
	9003	LS	2,44 m	611438	33	



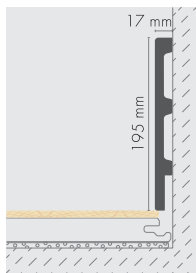
LPC-38 XPS



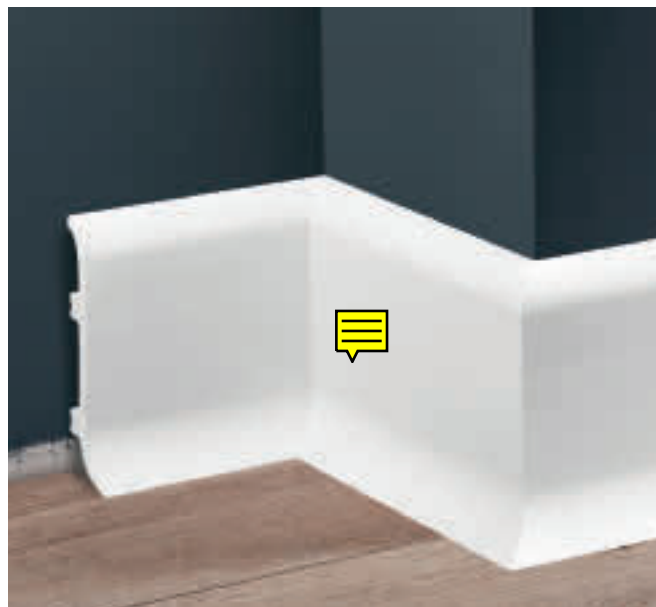
LPC-38	101	LM	2,44 m	611445	24	
	9003	LS	2,44 m	611452	24	



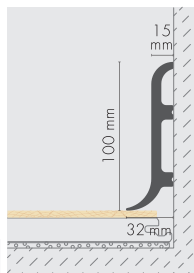
LPC-39 XPS



LPC-39	101	LM	2,44 m	611933	10	
	9003	LS	2,44 m	611940	10	



LPC-40 XPS



LPC-40	101	LM	2,44 m	602726	14	

(LM) Lakier matowy podkład / Matt lacquer primer / Matte Lackgrundierung, (LS) Lakier satynowy / Satin lacquer / Lack satiniert



LPC-50 XPS



LPC-50							
	101	LM	2,44 m	668364	33		
	9003	LS	2,44 m	668470	33		



LPC-51 XPS



LPC-51							
	101	LM	2,44 m	668500	29		
	9003	LS	2,44 m	668692	29		



LPC-52 XPS



LPC-52							
	101	LM	2,44 m	668708	22		
	9003	LS	2,44 m	668814	22		



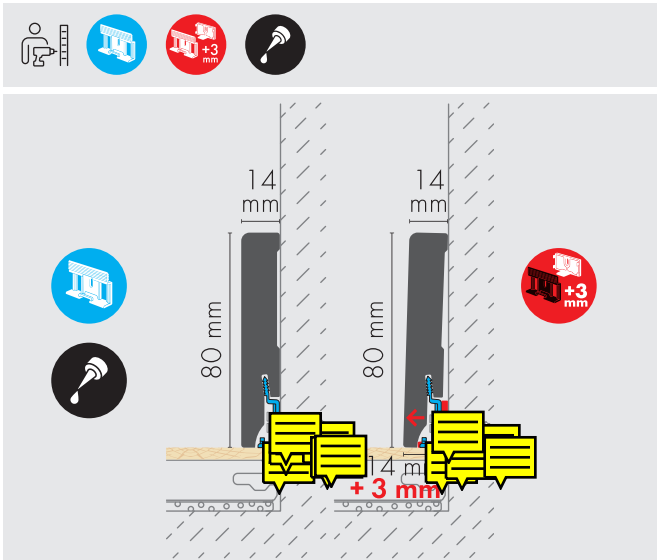
LPC-68 XPS



LPC-68							
	101	LM	2,44 m	849022	12		
	9003	LS	2,44 m	853548	12		



Elegance® Decor XPS



Okleina ze strukturą drewna
Wood-textured laminate
Holzstruktur-Laminat

Lisawy przypodłogowe/ Skirting boards/ Sockelleisten

LPC-51		349	OT	2,20 m	845994	10
		364	OT	2,20 m	846014	10
		366	OT	2,20 m	846007	10
		367	OT	2,20 m	845987	10
		368	OT	2,20 m	845970	10
		371	OT	2,20 m	845956	10
		376	OT	2,20 m	845963	10
		9005	OT	2,20 m	846045	10

(OT) Okleina półmat/ Foil with wood structure/ Folie mit Holzstruktur



LNG-09/ 101

LNG-14/ 101



LISTWY GZYMOWE CORNICE MOULDINGS GESIMSLEISTEN



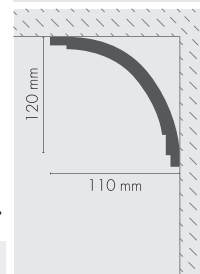
LGG-01 PU LGG-01F



LGG-01	101	S	2,40 m	899447	35
LGG-01F	101	S	2,40 m	899454***	36



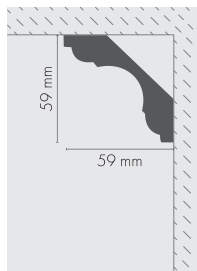
LGG-02 PU



LGG-02	101	S	2,40 m	899461	20



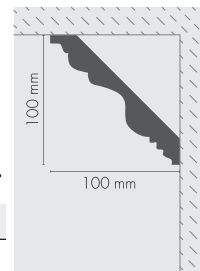
LGG-03 PU LGG-03F



LGG-03	101	S	2,40 m	899478	55
LGG-03F	101	S	2,40 m	899485***	50



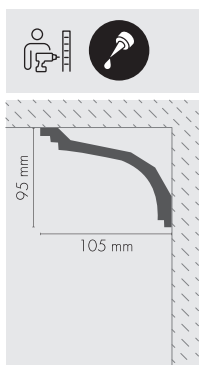
LGG-04 PU LGG-04F



LGG-04	101	S	2,40 m	899492	30
LGG-04F	101	S	2,40 m	899508	10



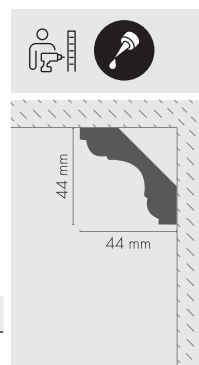
LGG-05 **PU**



LGG-05						
	101	S	2,40 m	899515	20	



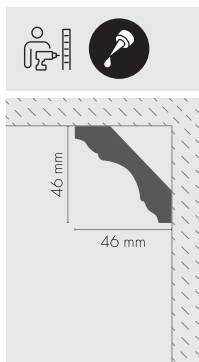
LGG-06 **PU**
LGG-06F



LGG-06						
	101	S	2,40 m	899522	60	
LGG-06F						
	101	S	2,40 m	899539***	27	



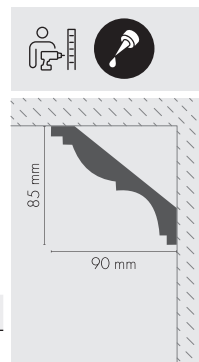
LGG-07 **PU**
LGG-07F



LGG-07						
	101	S	2,40 m	899546	30	
LGG-07F						
	101	S	2,40 m	899553***	45	



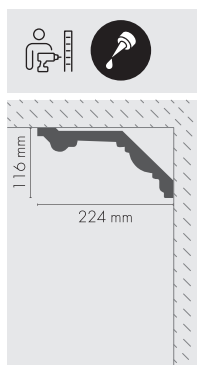
LGG-08 **PU**
LGG-08F



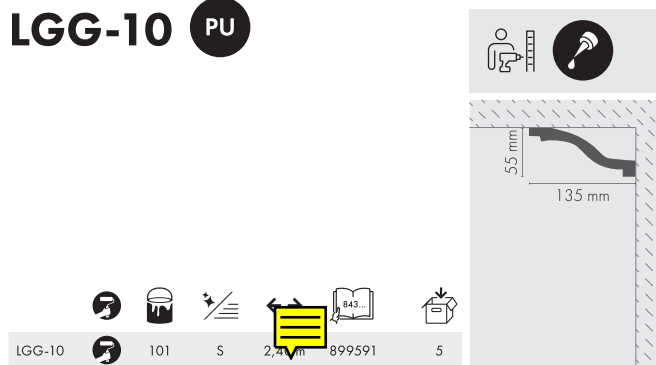
LGG-08						
	101	S	2,40 m	899560	30	
LGG-08F						
	101	S	2,40 m	899577***	30	



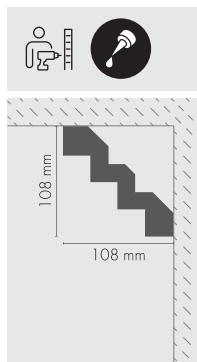
LGG-09 PU



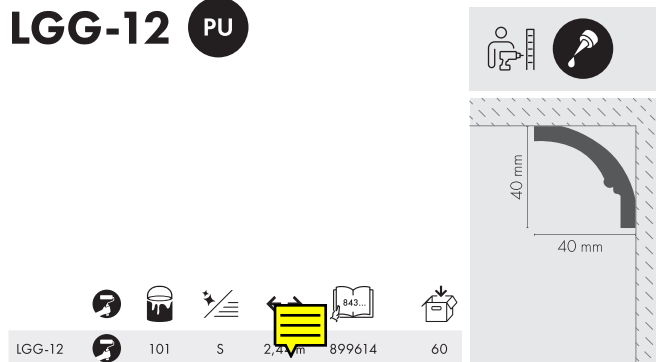
LGG-10 PU



LGG-11 PU

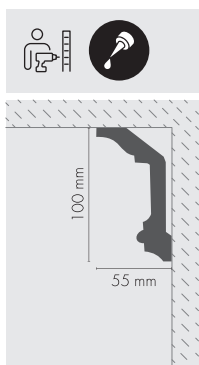


LGG-12 PU





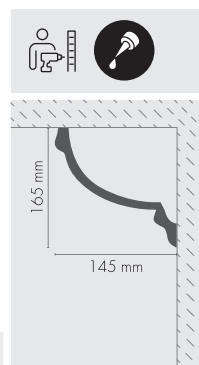
LGG-13 **PU**



LGG-13						
	101	S	2,40 m	899621	10	



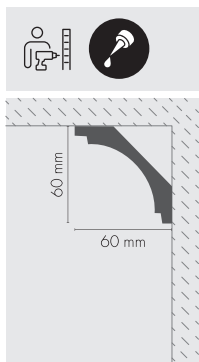
LGG-14 **PU**



LGG-14						
	101	S	2,40 m	899638	10	



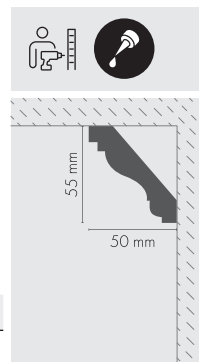
LGG-15 **PU**
LGG-15F



LGG-15						
	101	S	2,40 m	899645	60	
LGG-15F						
	101	S	2,40 m	899652	55	



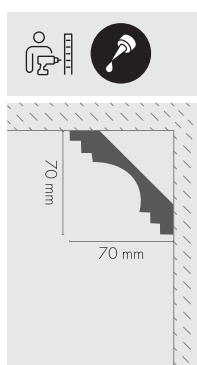
LGG-16 **PU**
LGG-16F



LGG-16						
	101	S	2,40 m	899669	66	
LGG-16F						
	101	S	2,44 m	899676***	60	



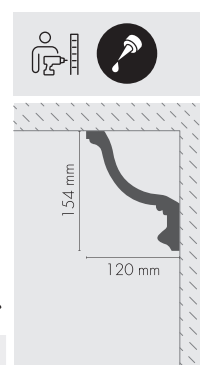
LGG-17 **PU**
LGG-17F



LGG-17	101	S	2,40 m	899683	35
LGG-17F	101	S	2,40 m	899690***	38



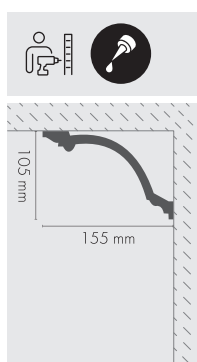
LGG-18 **PU**



LGG-18	101	S	2,40 m	899706	5



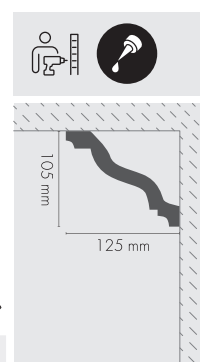
LGG-19 **PU**



LGG-19	101	S	2,40 m	899713	14



LGG-20 **PU**

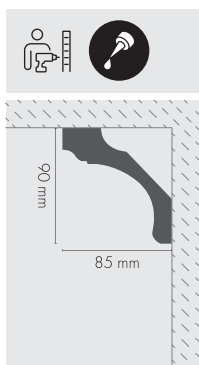


LGG-20	101	S	2,40 m	899720	15

[S] Wykończenie surowe/ Raw finish/ Rohe Oberfläche



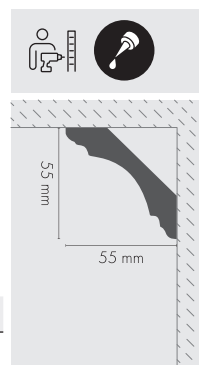
LGG-21 PU



LGG-21	101	S	2,40 m	899737	30
--------	-----	---	--------	--------	----



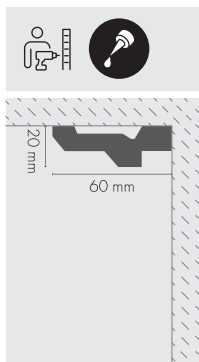
LGG-22 PU
LGG-22F



LGG-22	101	S	2,40 m	899744	10
LGG-22F	101	S	2,40 m	899751***	30



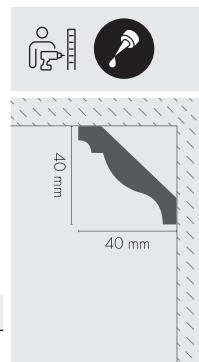
LGG-23 PU



LGG-23	101	S	2,40 m	899768	60
--------	-----	---	--------	--------	----



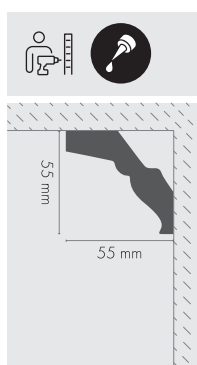
LGG-24 PU
LGG-24F



LGG-24	101	S	2,40 m	899775	55
LGG-24F	101	S	2,40 m	899782***	56



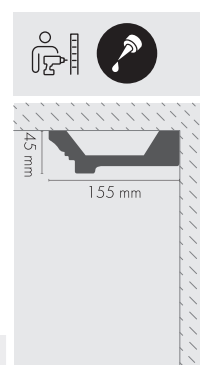
LGG-25 **PU**



LGG-25						
	101	S	2,40 m	899799	15	



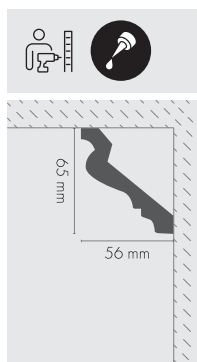
LGG-26 **PU**



LGG-26						
	101	S	2,40 m	899805	10	



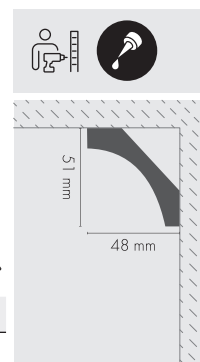
LGG-27 **PU**
LGG-27F



LGG-27						
	101	S	2,40 m	899812	40	
LGG-27F						
	101	S	2,40 m	899829***	45	



LGG-28 **PU**
LGG-28F

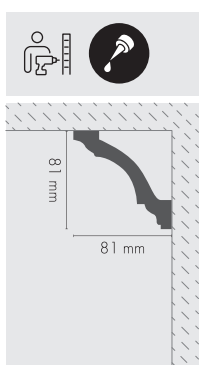


LGG-28						
	101	S	2,40 m	899836	50	
LGG-28F						
	101	S	2,40 m	899843***	70	



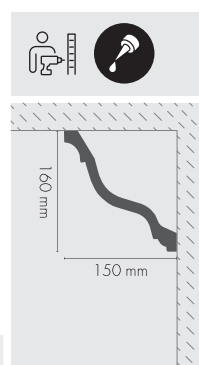
LGG-29 **PU**
LGG-29F

LGG-29	101	S	2,40 m	899850	35
LGG-29F	101	S	2,40 m	899867***	40



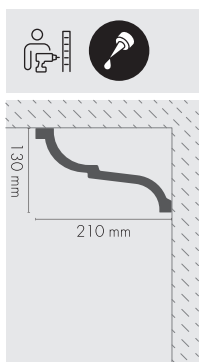
LGG-30 **PU**

LGG-30	101	S	2,40 m	899874	15



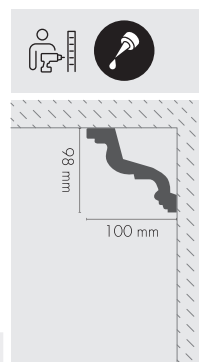
LGG-31 **PU**

LGG-31	101	S	2,40 m	899881	5



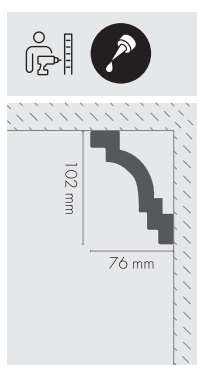
LGG-32 **PU**

LGG-32	101	S	2,40 m	881992	5





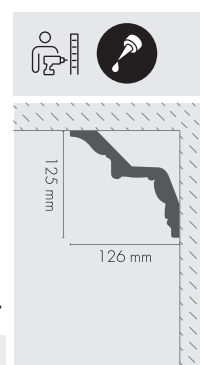
LGG-33 PU



LGG-33 101 S 2,44 m 882005 40



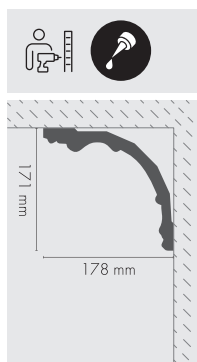
LGG-34 PU



LGG-34 101 S 2,44 m 882012 14



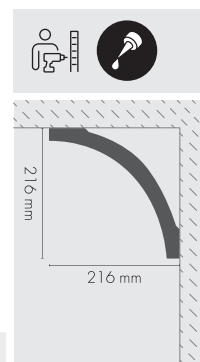
LGG-35 PU



LGG-35 101 S 2,44 m 861031 6



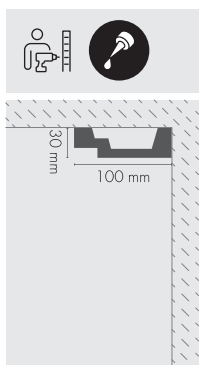
LGG-36 PU



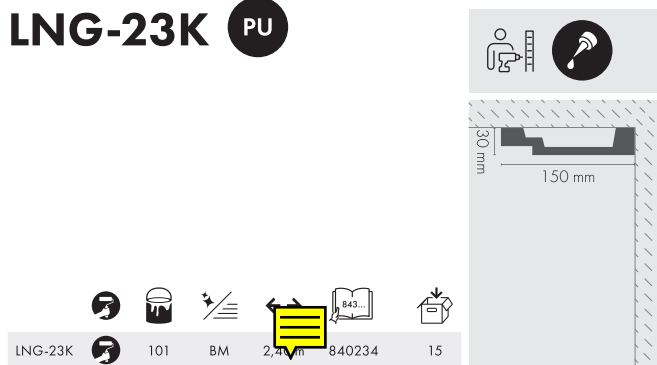
LGG-36 101 S 2,44 m 861048 10



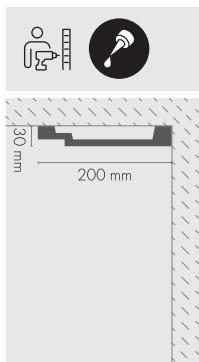
LNG-22K **PU**



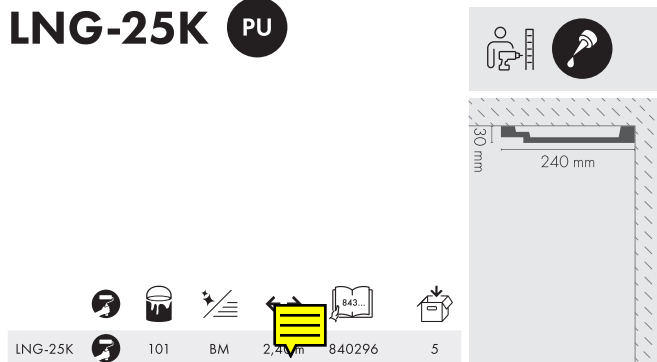
LNG-23K **PU**



LNG-24K **PU**



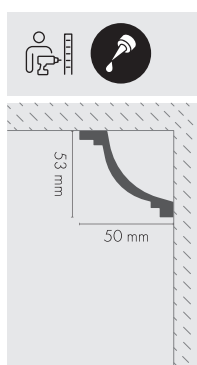
LNG-25K **PU**





LGG-38K XPS

LGG-38KX PU

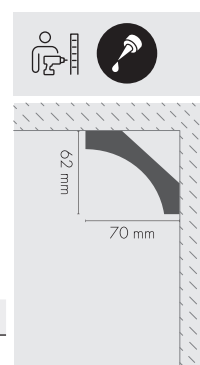


LGG-38K		101	BM	2,44 m 839702	55
LGG-38KX		101	BM	2,44 m 840135	45



LGG-39K PU

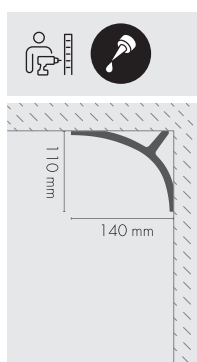
LGG-39KX



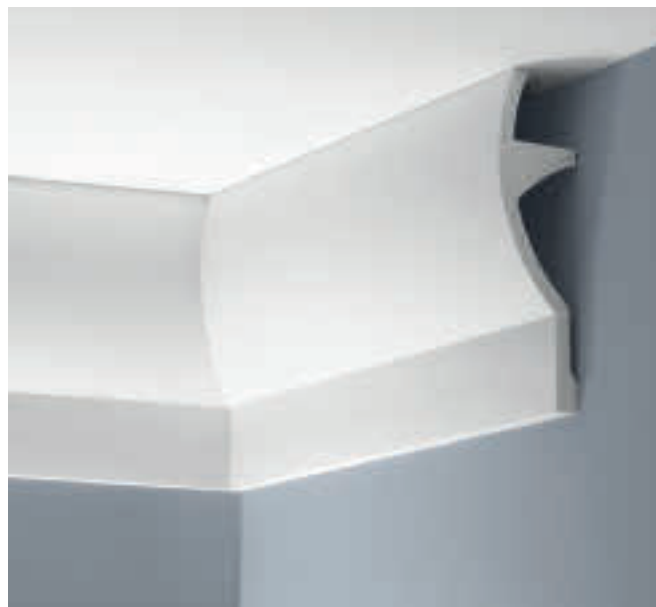
LGG-39K		101	BM	2,44 m 839719	40
LGG-39KX		101	BM	2,44 m 840142	10



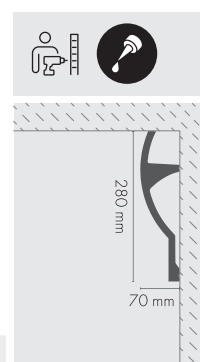
LGG-40K PU



LGG-40K		101	BM	2,44 m 839573	10



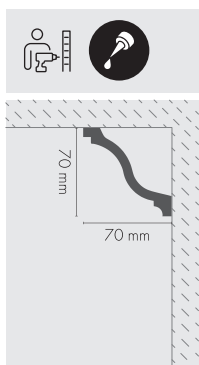
LGG-41K PU



LGG-41K		101	BM	2,44 m 840159	5



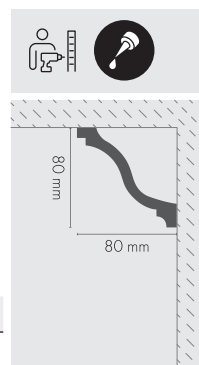
LGG-42K **PU**



LGG-42K						
	101	BM	2,44 m	839771	40	



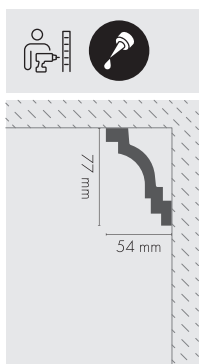
LGG-43K **PU**
LGG-43KX



LGG-43K						
	101	BM	2,44 m	839795	48	
LGG-43KX						
	101	BM	2,44 m	840173	50	



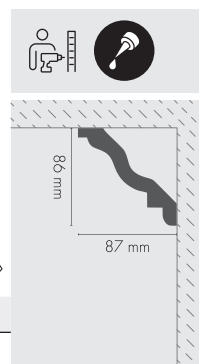
LGG-44K **PU**
LGG-44KX



LGG-44K						
	101	BM	2,44 m	839788	40	
LGG-44KX						
	101	BM	2,40 m	840166	5	



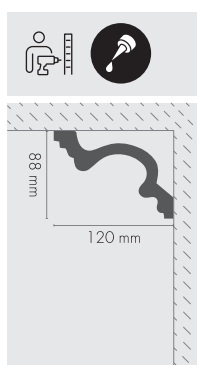
LGG-45K **XPS**
LGG-45KX **PU**



LGG-45K						
	101	BM	2,44 m	839801	10	
LGG-45KX						
	101	BM	2,44 m	840180**	5	



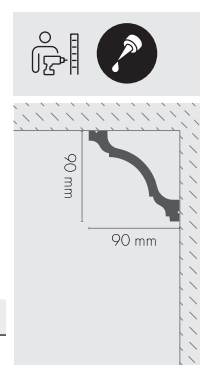
LGG-46K **PU**



LGG-46K	101	BM	2,44 m	839818	15



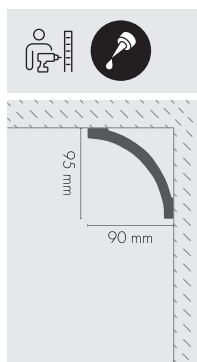
LGG-47K **PU**
LGG-47KX



LGG-47K	101	BM	2,44 m	839825	40
LGG-47KX	101	BM	2,44 m	840197	5



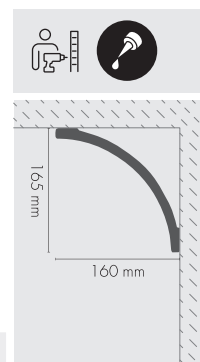
LGG-48K **PU**



LGG-48K	101	BM	2,44 m	839849	40



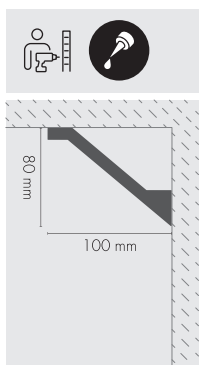
LGG-49K **PU**



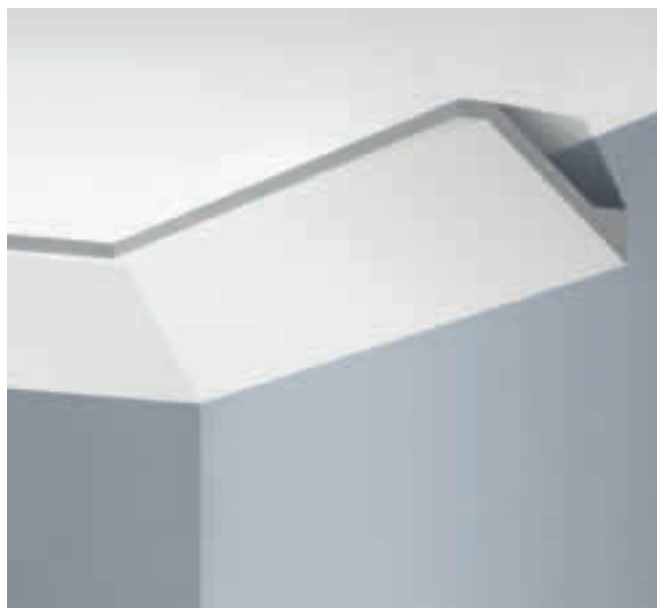
LGG-49K	101	BM	2,44 m	839672	5



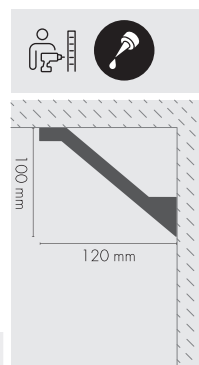
LGG-50K PU



LGG-50K	101	BM	2,40 m	839504	10
---------	-----	----	--------	--------	----



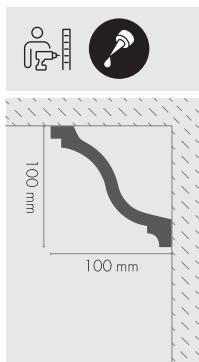
LGG-51K PU



LGG-51K	101	BM	2,40 m	839580	10
---------	-----	----	--------	--------	----



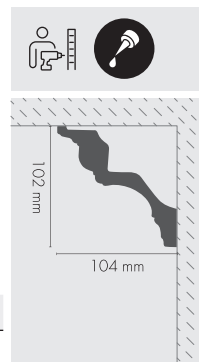
LGG-52K PU



LGG-52K	101	BM	2,40 m	839498	30
---------	-----	----	--------	--------	----



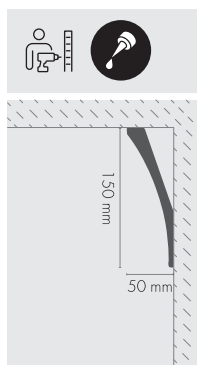
LGG-53K PU
LGG-53KX PU



LGG-53K	101	BM	2,40 m	840111	16
LGG-53KX	101	BM	2,40 m	840128	16



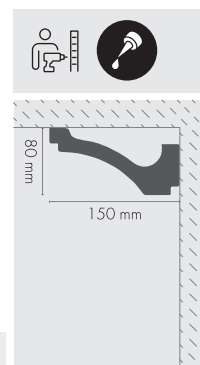
LGG-54K **PU**



LGG-54K 101 BM 2,4 mm 839603 40



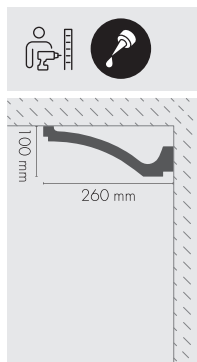
LGG-55K **PU**



LGG-55K 101 BM 2,4 mm 839610 10



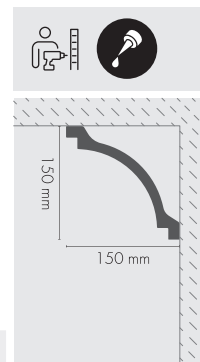
LGG-56K **PU**



LGG-56K 101 BM 2,4 mm 839696 10



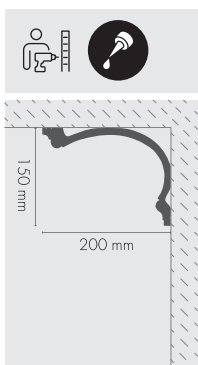
LGG-57K **PU**



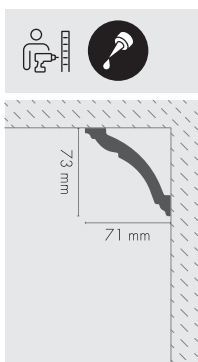
LGG-57K 101 BM 2,4 mm 839597 16



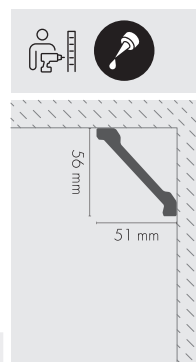
LGG-58K **PU**



LOC-05 **XPS**

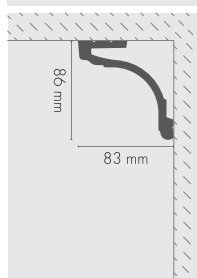


LOC-06 **XPS**





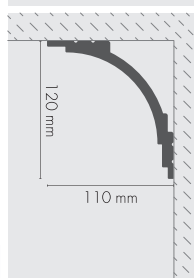
LK-05 XPS



LK-05	101	LM	2,4 mm	843...	830488	10
-------	-----	----	--------	--------	--------	----



LK-06 XPS

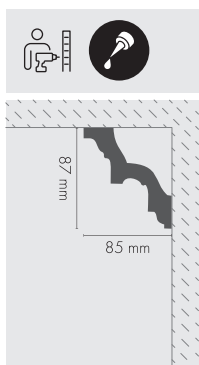


LK-06	101	LM	2,4 mm	843...	848698	6
-------	-----	----	--------	--------	--------	---





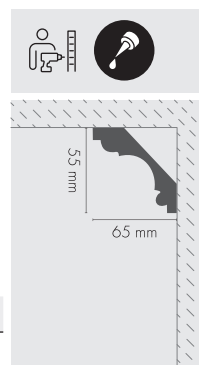
LGZ-01 PU



LGZ-01						
	101	S	2,40 m	899249	10	



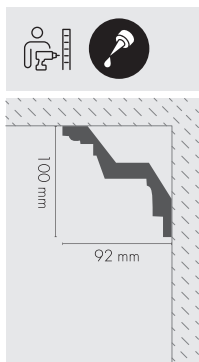
LGZ-02 PU
LGZ-02F



LGZ-02						
	101	S	2,40 m	899256	54	
LGZ-02F						
	101	S	2,40 m	899263***	30	



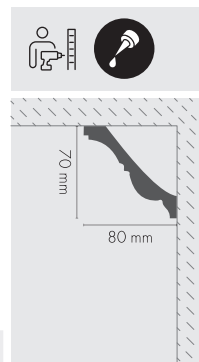
LGZ-03 PU



LGZ-03						
	101	S	2,40 m	899270	5	



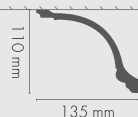
LGZ-04 PU



LGZ-04						
	101	S	2,40 m	899287	5	



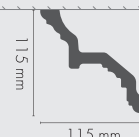
LGZ-05 **PU**
LGZ-05F



LGZ-05	101	S	2,40 m	899294	15
LGZ-05F	101	S	2,40 m	899300***	15



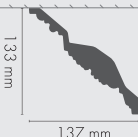
LGZ-06 **PU**



LGZ-06	101	S	2,40 m	899317	15



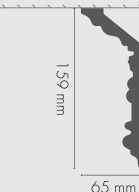
LGZ-07 **PU**



LGZ-07	101	S	2,40 m	899324	15



LGZ-08 **PU**

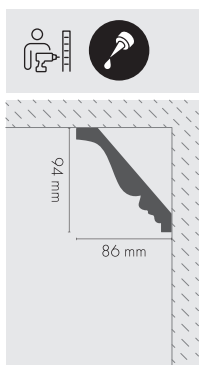


LGZ-08	101	S	2,40 m	899331	25

[S] Wykończenie surowe/ Raw finish/ Rohe Oberfläche



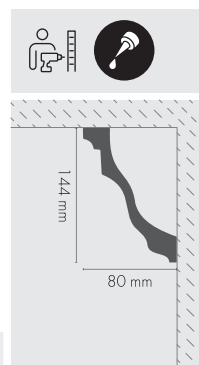
LGZ-09 **PU**
LGZ-09F



LGZ-09	101	S	2,40 m	899348	15
LGZ-09F	101	S	2,40 m	899355***	30



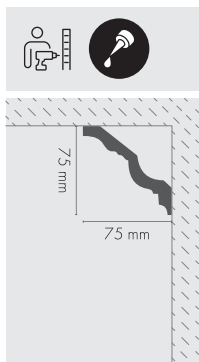
LGZ-10 **PU**



LGZ-10	101	S	2,40 m	899362	25
--------	-----	---	--------	--------	----



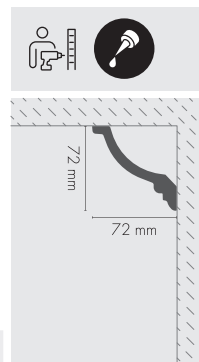
LGZ-11 **PU**
LGZ-11F



LGZ-11	101	S	2,40 m	899379	50
LGZ-11F	101	S	2,40 m	899386***	28



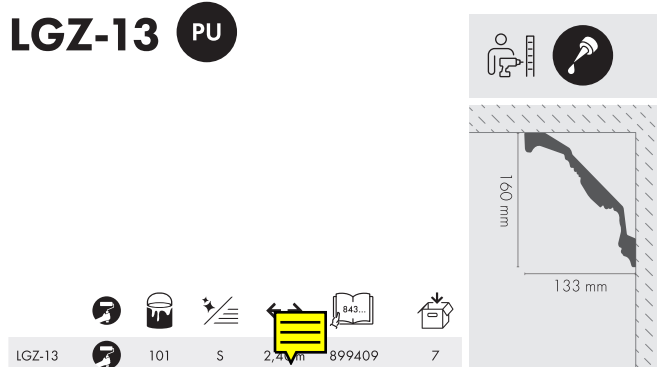
LGZ-12 **PU**



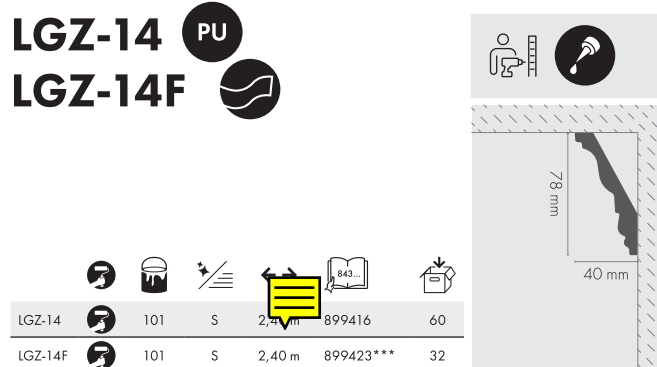
LGZ-12	101	S	2,40 m	899393	40
--------	-----	---	--------	--------	----



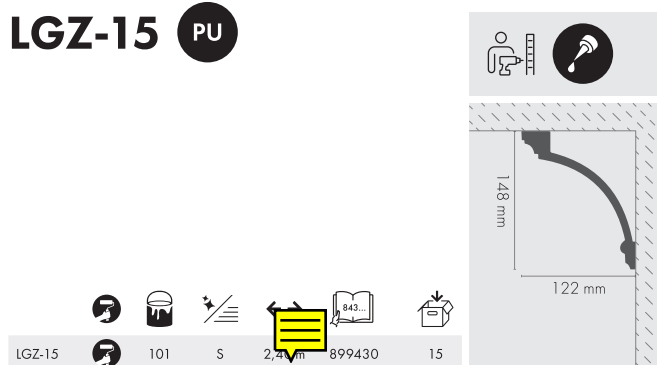
LGZ-13 PU



LGZ-14 PU
LGZ-14F



LGZ-15 PU



[S] Wykończenie surowe/ Raw finish/ Rohe Oberfläche

PU



LGG-35

178 x 171 x 2400 mm



1255 mm

LGZ-16

178 x 171 x 2400 mm



LGZ-17

178 x 171 x 2400 mm

Z jednej listwy LGZ-17 można wykonać 2 narożniki!
You can make 2 corners from one LGZ-17 moulding!
Aus einer Gesimsleiste LGZ-17 lassen sich 2 Ecken herstellen!



LGZ-17

LGG-35

LGZ-17

LGG-35		101	S	2,44 m	861031	6
LGZ-16			S	2,44 m	860966	10
LGZ-17			S	2,44 m	861000	5

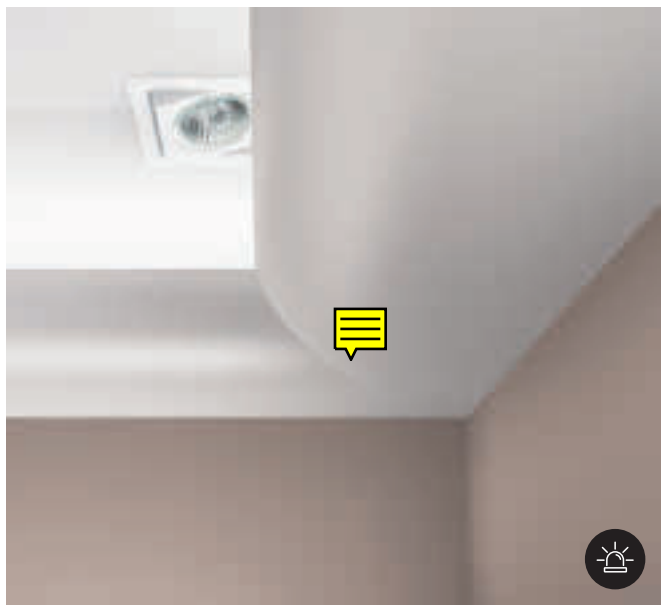


LOC-02/ 101

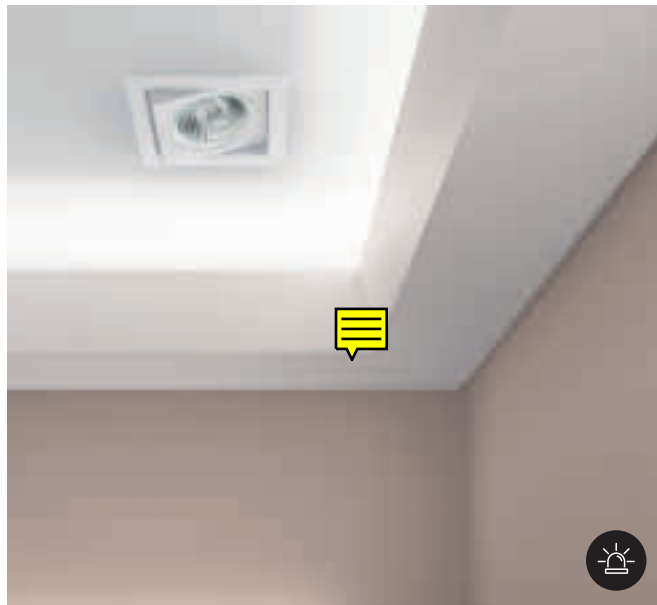
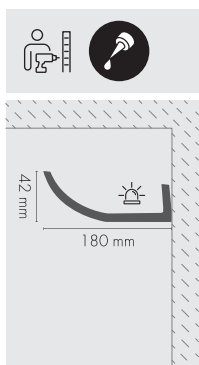


**LISTWY OŚWIETLENIOWE
LIGHTING MOULDINGS
LICHTLEISTEN**

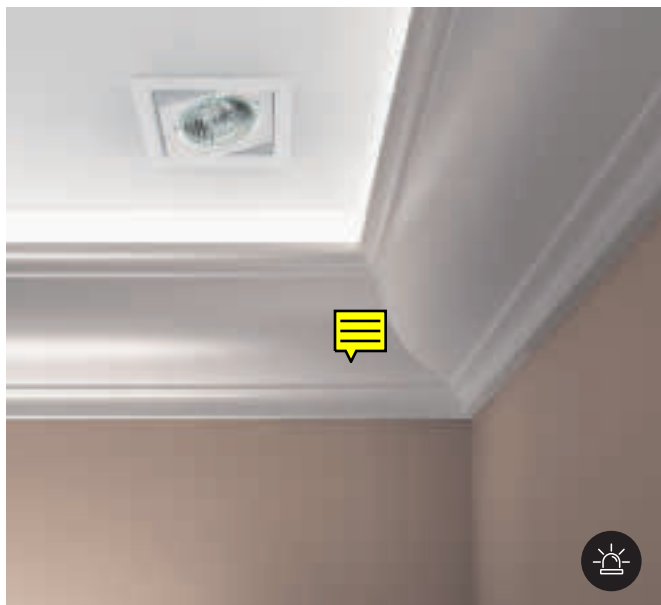
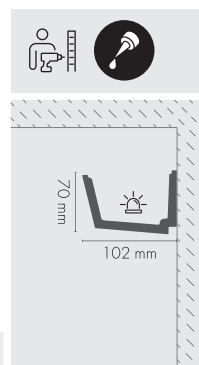
LPC-06/ 101



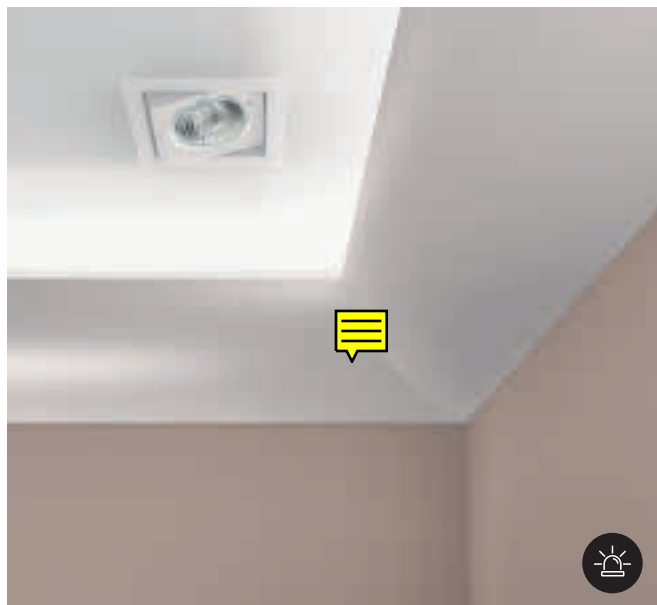
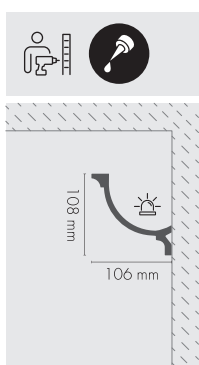
LOC-01 XPS



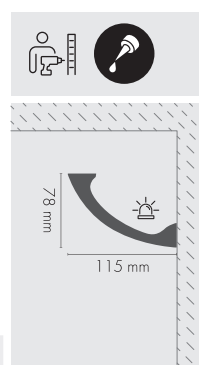
LOC-02 XPS



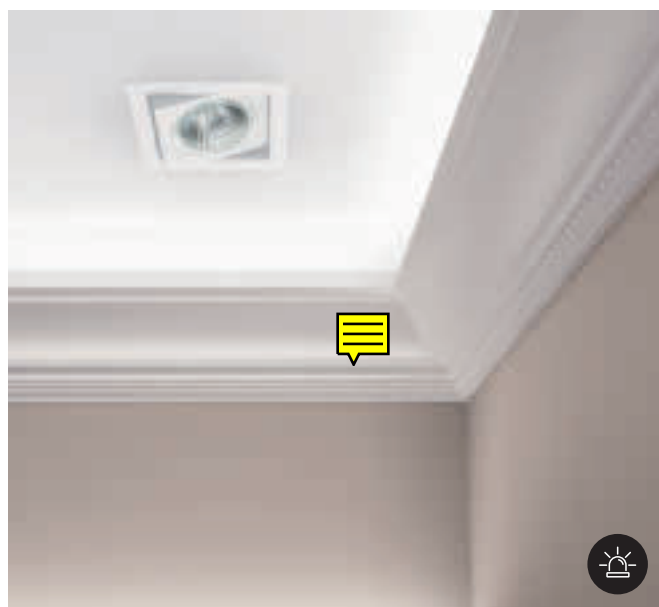
LOC-04 XPS



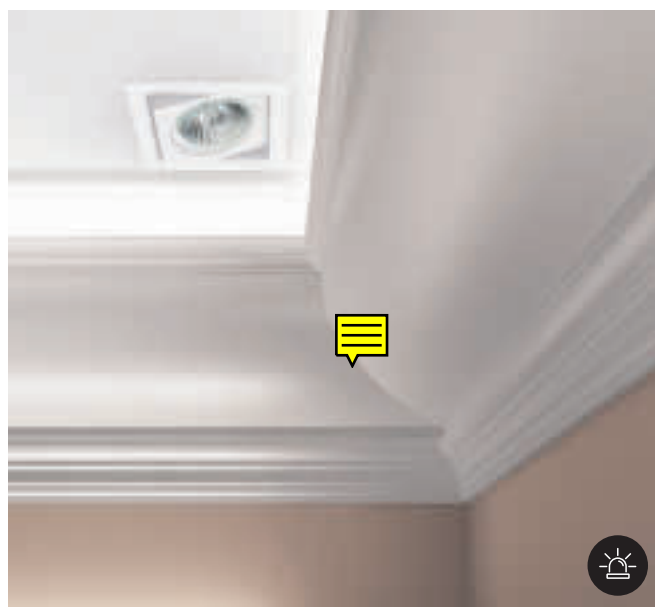
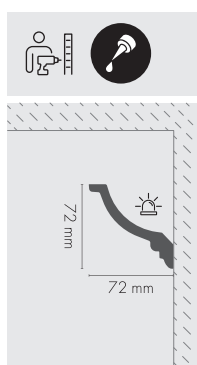
LOC-07 XPS



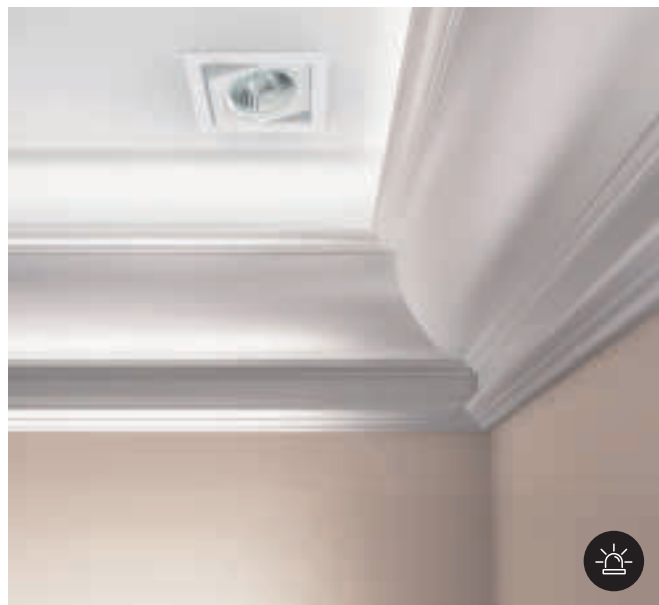
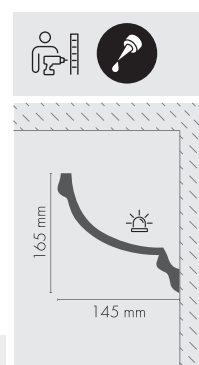
(LM) Lakier matowy podkład/ Matt lacquer primer/ Matte Lackgrundierung



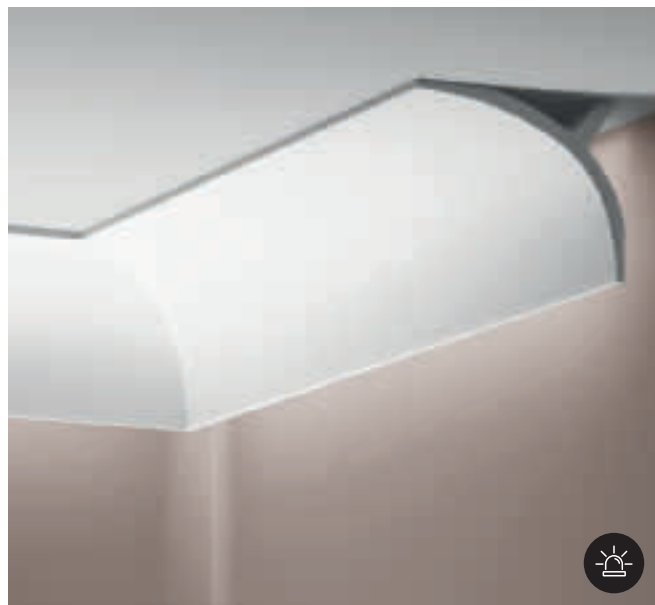
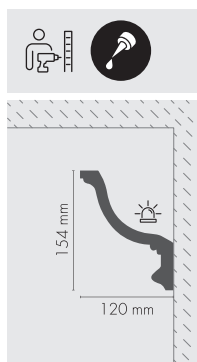
LGZ-12 PU



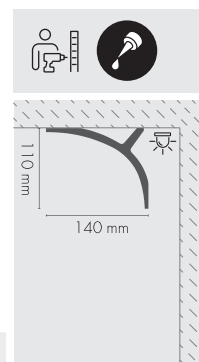
LGG-14 PU

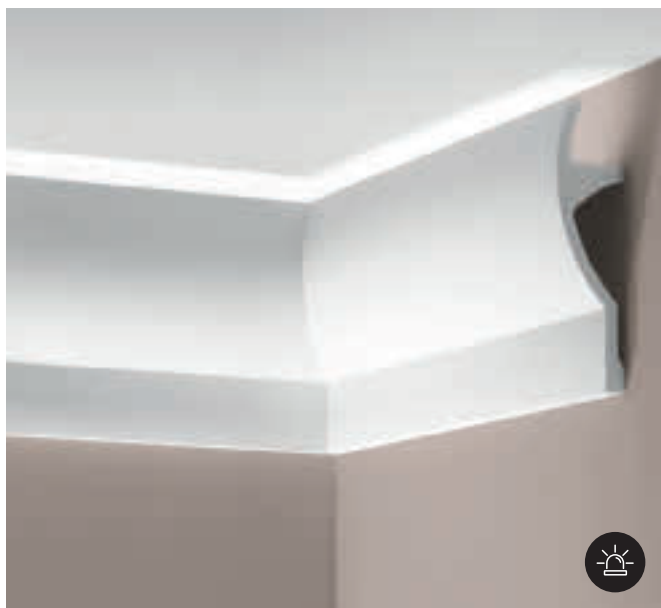


LGG-18 PU

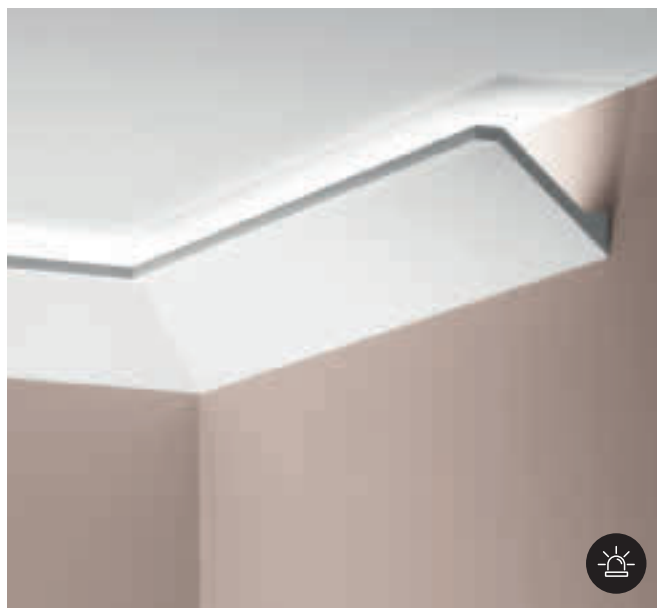
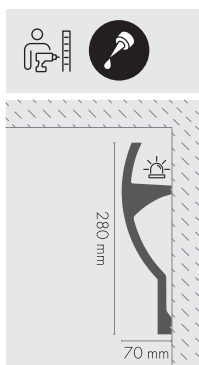


LGG-40K PU

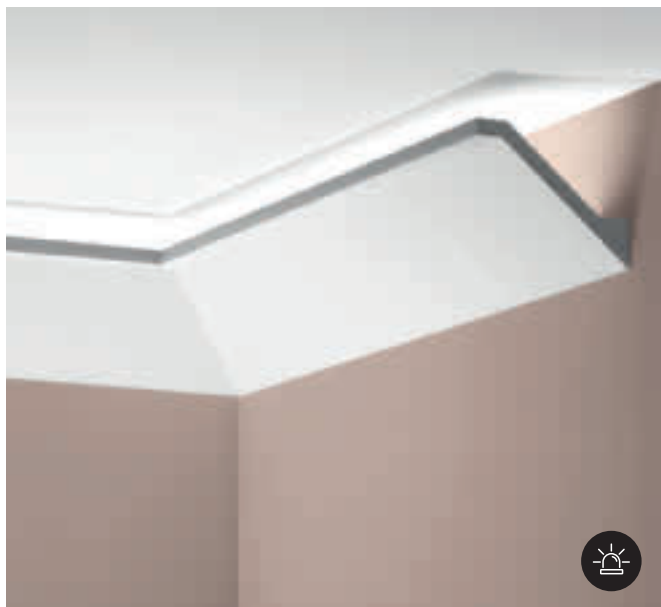
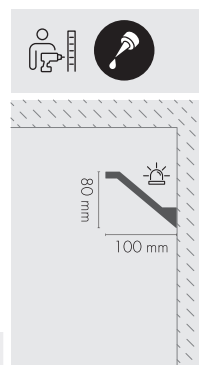




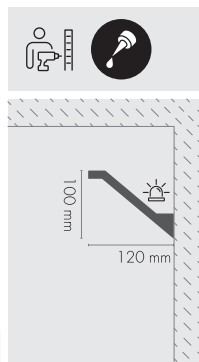
LGG-41K **PU**



LGG-50K **PU**



LGG-51K **PU**

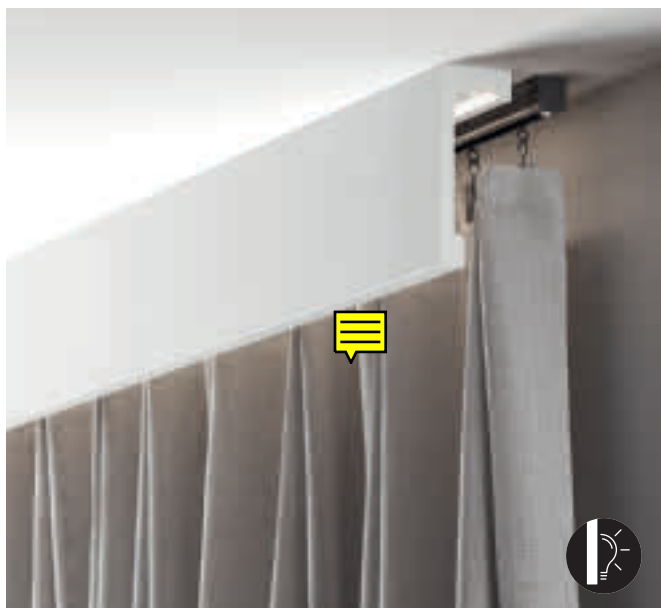




LK-01/ 101



LISTWY KARNISZOWE CURTAIN MOULDINGS GARDINENLEISTE

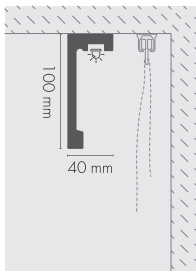


LK-01 XPS



	101	LM	2,44 m	664687	10	
LK-01	101	LM	3,00 m	845840**	10	
	9003	LS	2,44 m	664694	10	

** Na zamówienie/ On request/ Auf Anfrage

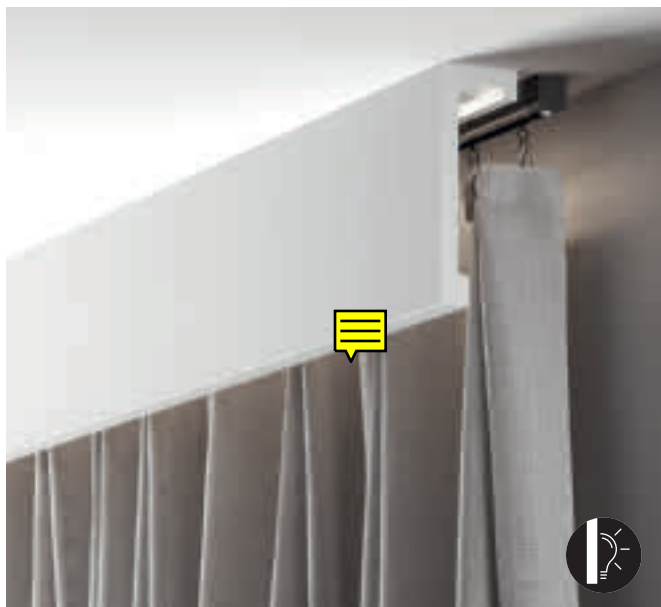
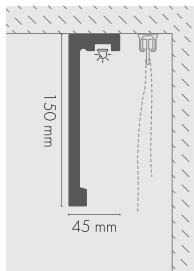


LK-02 XPS



	101	LM	2,44 m	664700	6	
LK-02	101	LM	3,00 m	845857**	6	
	9003	LS	2,44 m	664731	6	

** Na zamówienie/ On request/ Auf Anfrage

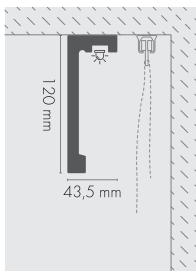


LK-03 XPS



	101	LM	2,44 m	664755	7	
LK-03	101	LM	3,00 m	845864**	7	
	9003	LS	2,44 m	664793	7	

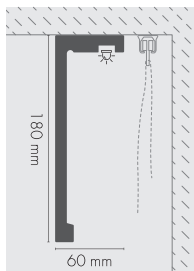
** Na zamówienie/ On request/ Auf Anfrage



LK-04 XPS

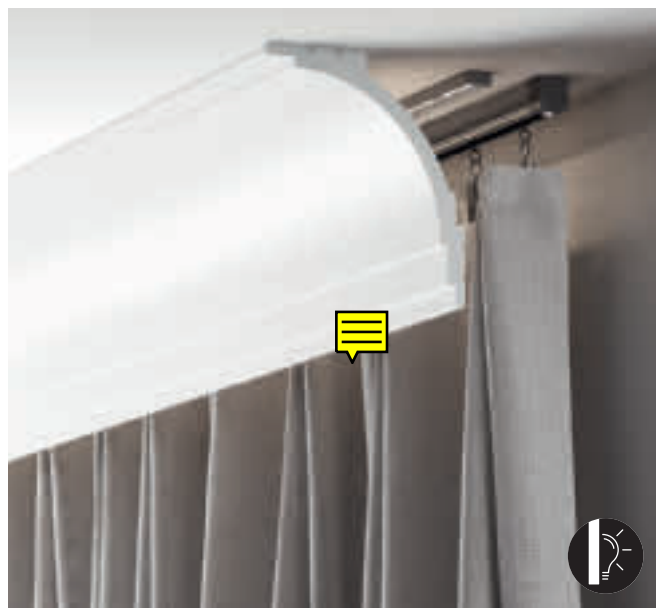
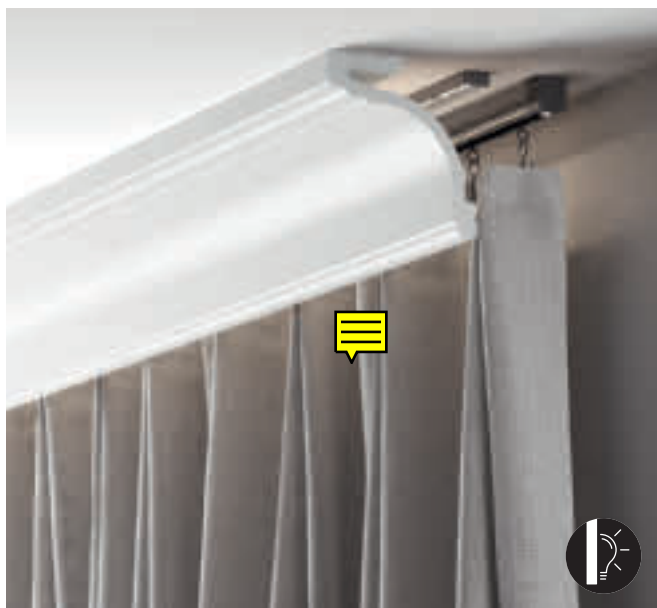


	101	LM	2,44 m	601880	4	
LK-04						

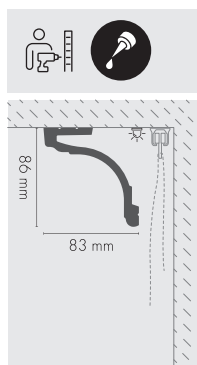


(LM) Lakier matowy podkład/ Matt lacquer primer/ Matte Lackgrundierung, (LS) Lakier satynowy/ Satin lacquer/ Lack satiniert

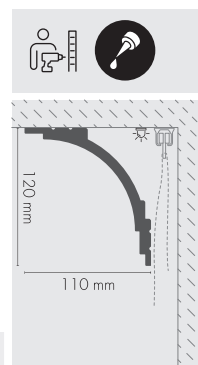
Cezar



LK-05 XPS



LK-06 XPS





LGG-40/ 101

LNG-09/ 101

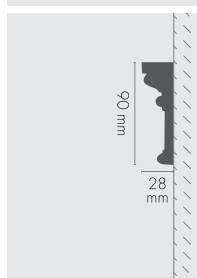


LNG-03/ 101

**LISTWY NAŚCIENNE
WALL MOULDINGS
WANDLEISTEN**



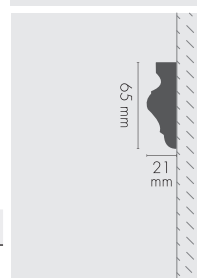
LNG-01 **PU**



LNG-01		101	S	2,40 m	899997	35



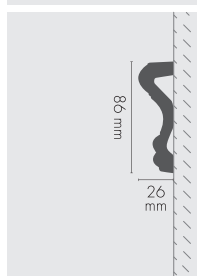
LNG-02 **PU**
LNG-02F



LNG-02		101	S	2,40 m	880001	40
LNG-02F		101	S	2,40 m	880018***	30



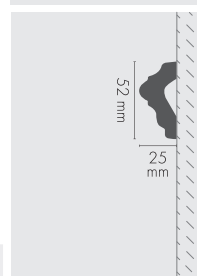
LNG-03 **PU**
LNG-03F



LNG-03		101	S	2,40 m	880025	50
LNG-03F		101	S	2,40 m	880032***	30



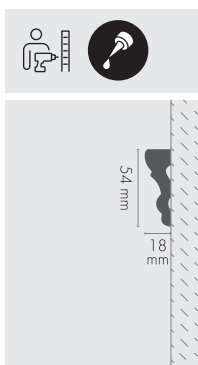
LNG-04 **PU**



LNG-04		101	S	2,40 m	880049	45



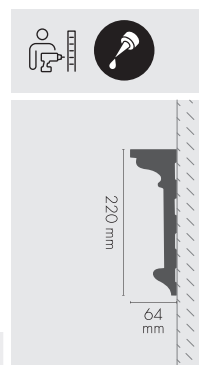
LNG-05 **PU**
LNG-05F



LNG-05		101	S	2,40 m	880063	60
LNG-05F		101	S	2,40 m	880087	10



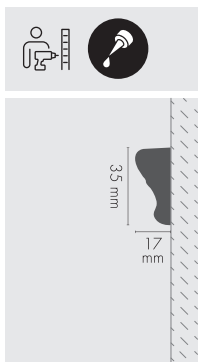
LNG-06 **PU**



LNG-06		101	S	2,40 m	880094	10



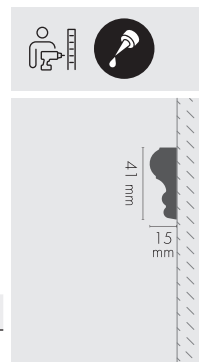
LNG-07 **PU**



LNG-07		101	S	2,40 m	880100	90



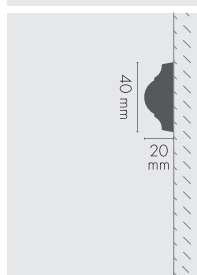
LNG-08 **XPS**
LNG-08F **PU**



LNG-08		101	LM	2,40 m	880117	48
LNG-08F		101	S	2,40 m	880148	30



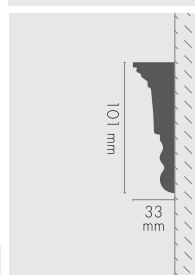
LNG-09 XPS LNG-09F PU



LNG-09	101	LM	2,40 m	880155	50
LNG-09F	101	S	2,40 m	880186	60



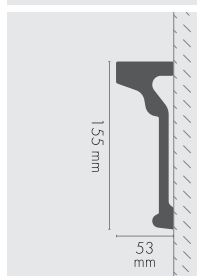
LNG-10 PU



LNG-10	101	S	2,40 m	880193	36



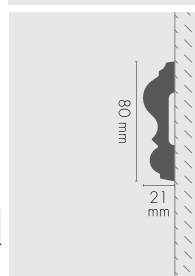
LNG-11 PU



LNG-11	101	S	2,40 m	880209	20



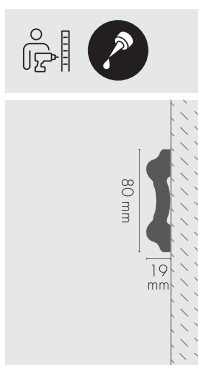
LNG-12 PU LNG-12F



LNG-12	101	S	2,40 m	880216	50
LNG-12F	101	S	2,40 m	880223	5



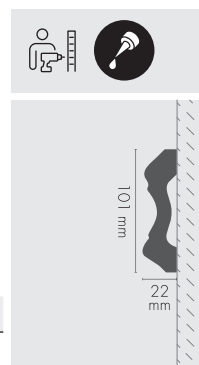
LNG-13 ^{PU} LNG-13F



LNG-13		101	S	2,40 m	880247	50
LNG-13F		101	S	2,40 m	880254***	40



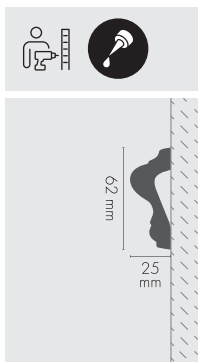
LNG-14 ^{PU} LNG-14F



LNG-14		101	S	2,40 m	880261	25
LNG-14F		101	S	2,40 m	880285***	34



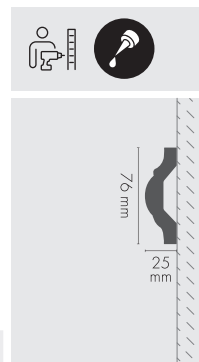
LNG-15 ^{PU} LNG-15F



LNG-15		101	S	2,40 m	880292	65
LNG-15F		101	S	2,40 m	880308***	55



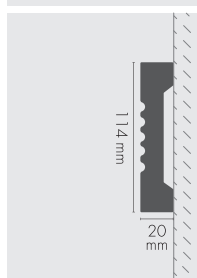
LNG-16 ^{PU}



LNG-16		101	S	2,40 m	880315	60



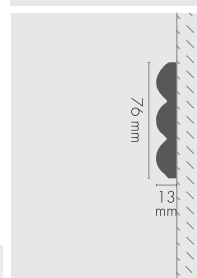
LNG-17 PU



LNG-17	101	S	2,44 m	880346	25
--------	-----	---	--------	--------	----



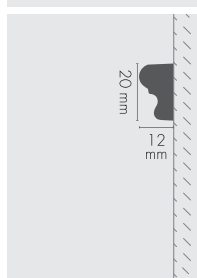
LNG-18 PU



LNG-18	101	S	2,44 m	880353	5
--------	-----	---	--------	--------	---



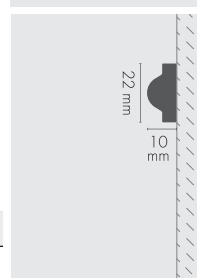
LNG-19K PU LNG-19KX BM



LNG-19K	101	BM	2,44 m	840258	100
LNG-19KX	101	BM	2,44 m	840265	50



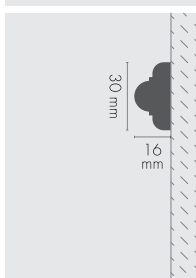
LNG-20K PU LNG-20KX BM



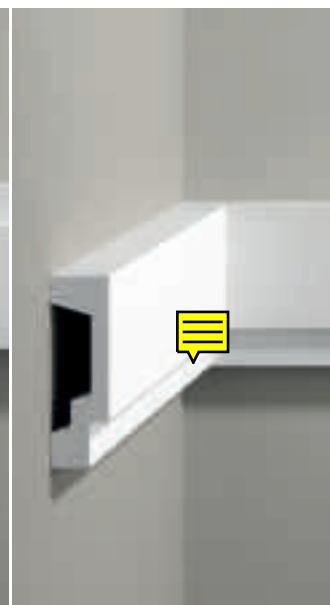
LNG-20K	101	BM	2,44 m	840272	80
LNG-20KX	101	BM	2,40 m	840289	25



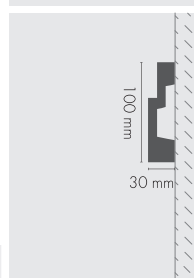
LNG-21K ^{PU} LNG-21KX



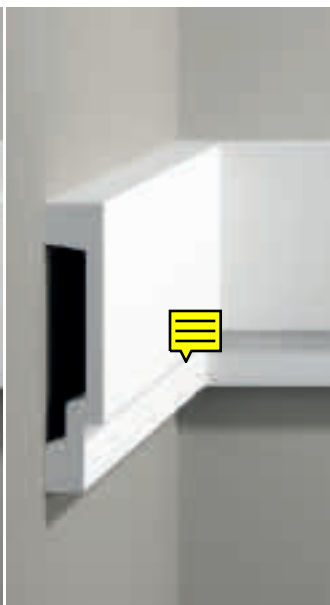
LNG-21K	101	BM	2,40 m	840326	5
LNG-21KX	101	BM	2,40 m	840333	5



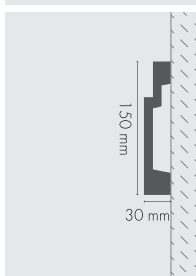
LNG-22K ^{PU}



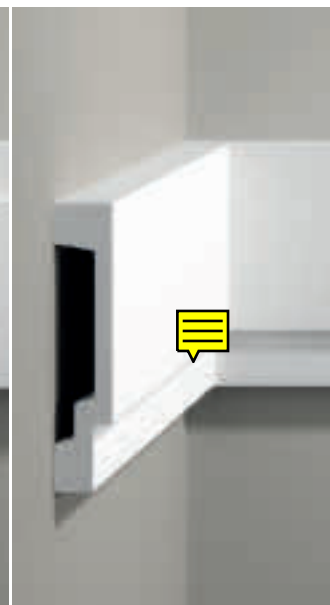
LNG-22K	101	BM	2,40 m	840227	10



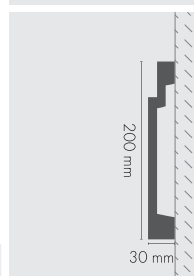
LNG-23K ^{PU}



LNG-23K	101	BM	2,40 m	840234	15



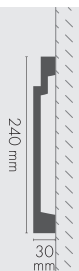
LNG-24K ^{PU}



LNG-24K	101	BM	2,40 m	840241	15



LNG-25K PU



LNG-25K 101 BM 2,44 m 840296 5

LNG-26 XPS



LNG-26 101 LM 2,44 m 898921 50



LNG-27 XPS



LNG-27 101 LM 2,44 m 898938 170

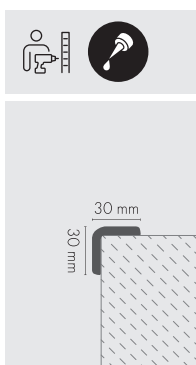
LNG-28 XPS



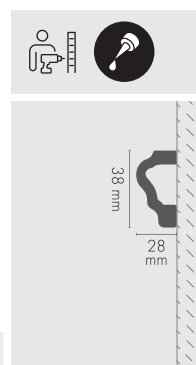
LNG-28 101 LM 2,44 m 898952 23



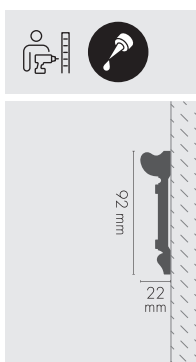
LNG-29 XPS



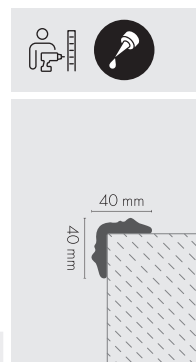
LNG-30 XPS



LNG-31 XPS

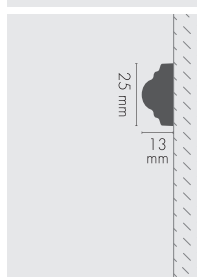


LGG-37 PU

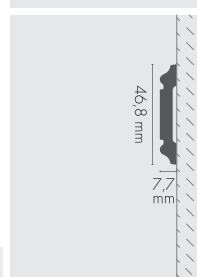




LNG-42 XPS



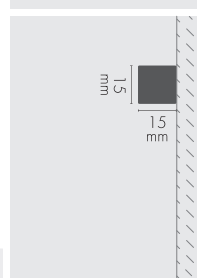
LPC-53 XPS



LPC-54 XPS



LPC-55 XPS





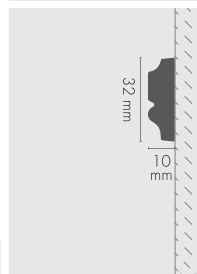
LPC-56 XPS



LPC-56 BI BM 2,4 m 826085** 330



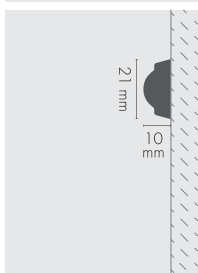
LNG-57 XPS



LNG-57 BI BM 2,4 m 826092** 100



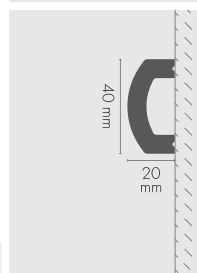
LNG-58 XPS



LNG-58 BI BM 2,4 m 826108** 160



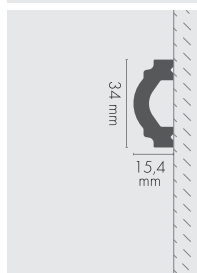
LNG-59 XPS



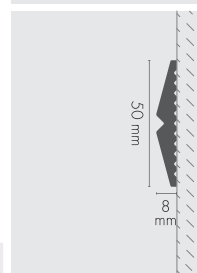
LNG-59 101 LM 2,4 m 853760 40



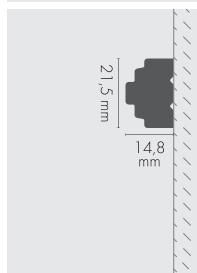
LNG-60 XPS



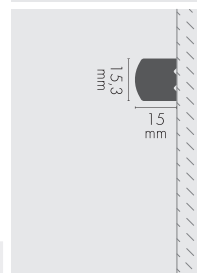
LNG-61 XPS



LNG-62 XPS



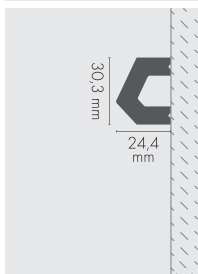
LNG-63 XPS



(LM) Lakier matowy podkład/ Matt lacquer primer/ Matte Lackgrundierung



LNG-64 XPS





LNZ-01 **PU**
LNZ-01F



78 mm
13 mm

LNZ-01	101	S	2,40 m	899898	35		
LNZ-01F	101	S	2,40 m	899904***	36		



LNZ-02 **PU**
LNZ-02F



127 mm
16 mm

LNZ-02	101	S	2,44 m	899911	20		
LNZ-02F	101	S	2,44 m	899928***	36		



LNZ-03 **PU**
LNZ-03F



81 mm
20 mm

LNZ-03	101	S	2,40 m	899935	20		
LNZ-03F	101	S	2,40 m	899942***	30		



LNZ-04 **PU**
LNZ-04F

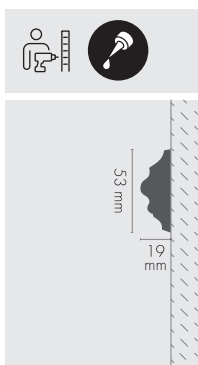


51 mm
19 mm

LNZ-04	101	S	2,40 m	899959	35		
LNZ-04F	101	S	2,40 m	899966***	40		



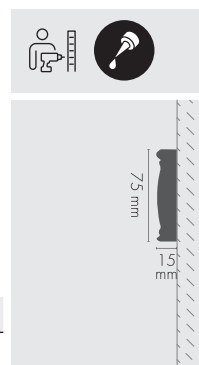
LNZ-05 **PU**
LNZ-05F



LNZ-05	101	S	2,40 m	899973	45	
LNZ-05F	101	S	2,40 m	899980***	38	



LNZ-06 **PU**
LNZ-06F



LNZ-06	101	S	2,40 m	861079	55	
LNZ-06F	101	S	2,40 m	861086***	42	



NAROŻNIKI DO LISTEW NAŚCIENNYCH WALL CORNER MOULDINGS DEKORATIVE ECKSTÜCKE FÜR WANDLEISTEN

PU

LNG-02-1		101	S	270 x 270 x 21 mm	880421	60
LNG-02-2		101	S	240 x 240 x 21 mm	880438	50
LNG-07-1		101	S	170 x 170 x 15 mm	880445	50
LNG-08-1		101	S	230 x 230 x 15 mm	880452	100
LNG-09-1		101	S	210 x 210 x 20 mm	880469	5
LNG-09-2		101	S	235 x 110 x 20 mm	880483	80
LNG-09-3		101	S	155 x 155 x 20 mm	880490	100
LNG-20-1		101	S	130 x 130 x 16 mm	845680	30
LNZ-03-1		101	S	505 x 505 x 27 mm	880360	25
LNZ-03-2		101	S	410 x 410 x 20 mm	880384	5
LNZ-04-1		101	S	240 x 240 x 19 mm	880391	20
LNZ-05-1		101	S	255 x 255 x 19 mm	880407	10
LNZ-05-2		101	S	255 x 255 x 19 mm	880414	80



LNZ-04-1



LNZ-04



LNG-08-1



LNG-08



LNG-07-1



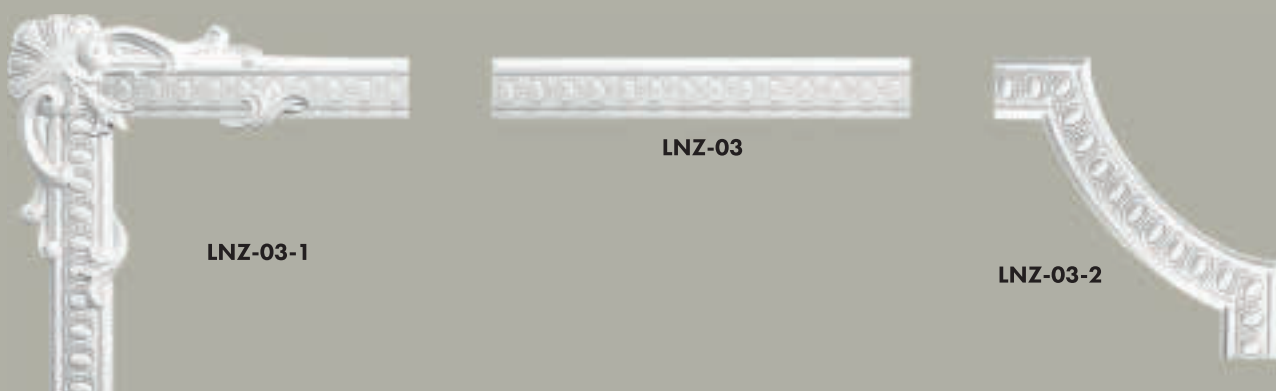
LNG-07

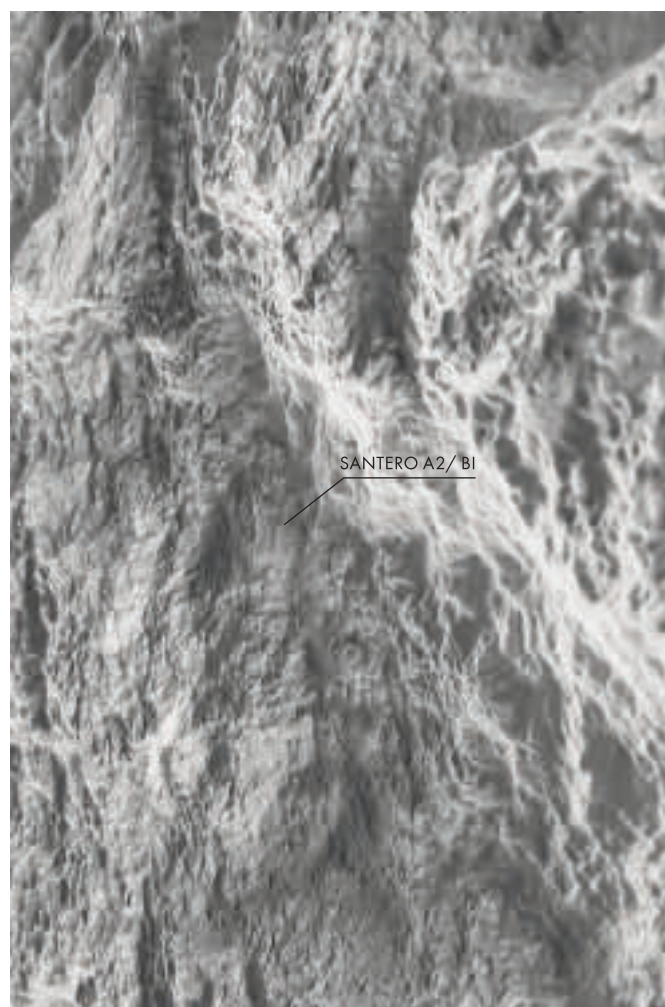


LNG-20-1



LNG-20





THALIA® 3/ 101

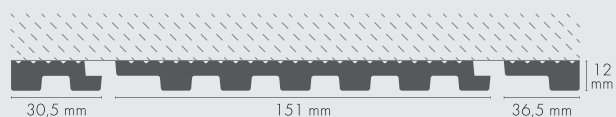
LPC-20/ 101



PANELE ŚCIENNE
WALL PANELS
WANDPANELEE



THALIA® 1 XPS



PT01-62

Listwa zakończeniowa lewa
Left finishing trim
Linke Abschlussleiste

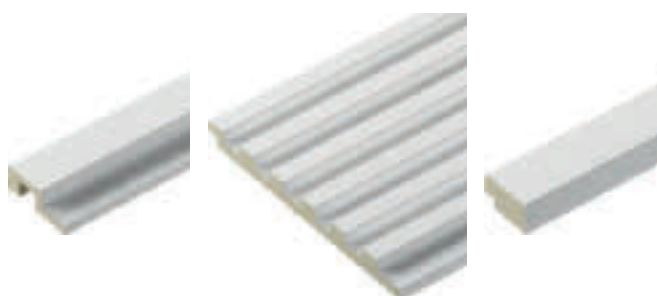
PT01-61

PT01-63

Listwa zakończeniowa prawa
Right finishing trim
Rechte Abschlussleiste



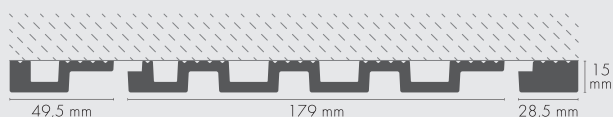
	PT01-61	PT01-62	PT01-63
101	101	101	101
LM	LM	LM	LM
2,8 m	2,8 m	2,8 m	2,8 m
848728	848735	848742	848742
17	46	32	32



(LM) Lakier matowy podkład/ Matt lacquer primer/ Matte Lackgrundierung



THALIA® 2 XPS



PT02-65

Listwa zakończeniowa lewa
Left finishing trim
Linke Abschlussleiste

PT02-64

PT02-66

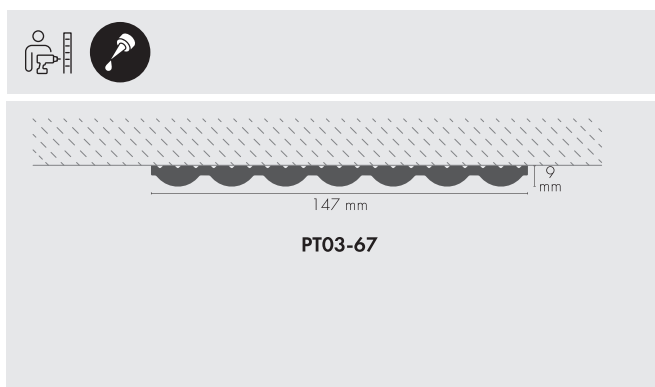
Listwa zakończeniowa prawa
Right finishing trim
Rechte Abschlussleiste

PT02-64		101	LM	2,8 m	848759	10
PT02-65		101	LM	2,8 m	848773	23
PT02-66		101	LM	2,8 m	848766	20





THALIA® 3 **XPS**



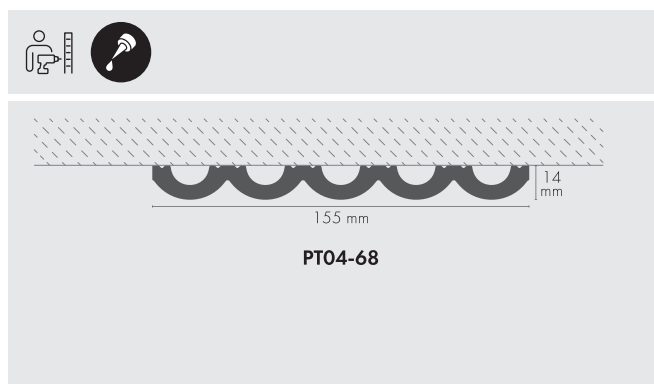
PT03-67						
PT03-67	101	LM	2,7 m	848780	24	



(LM) Lakier matowy podkład/ Matt lacquer primer/ Matte Lackgrundierung

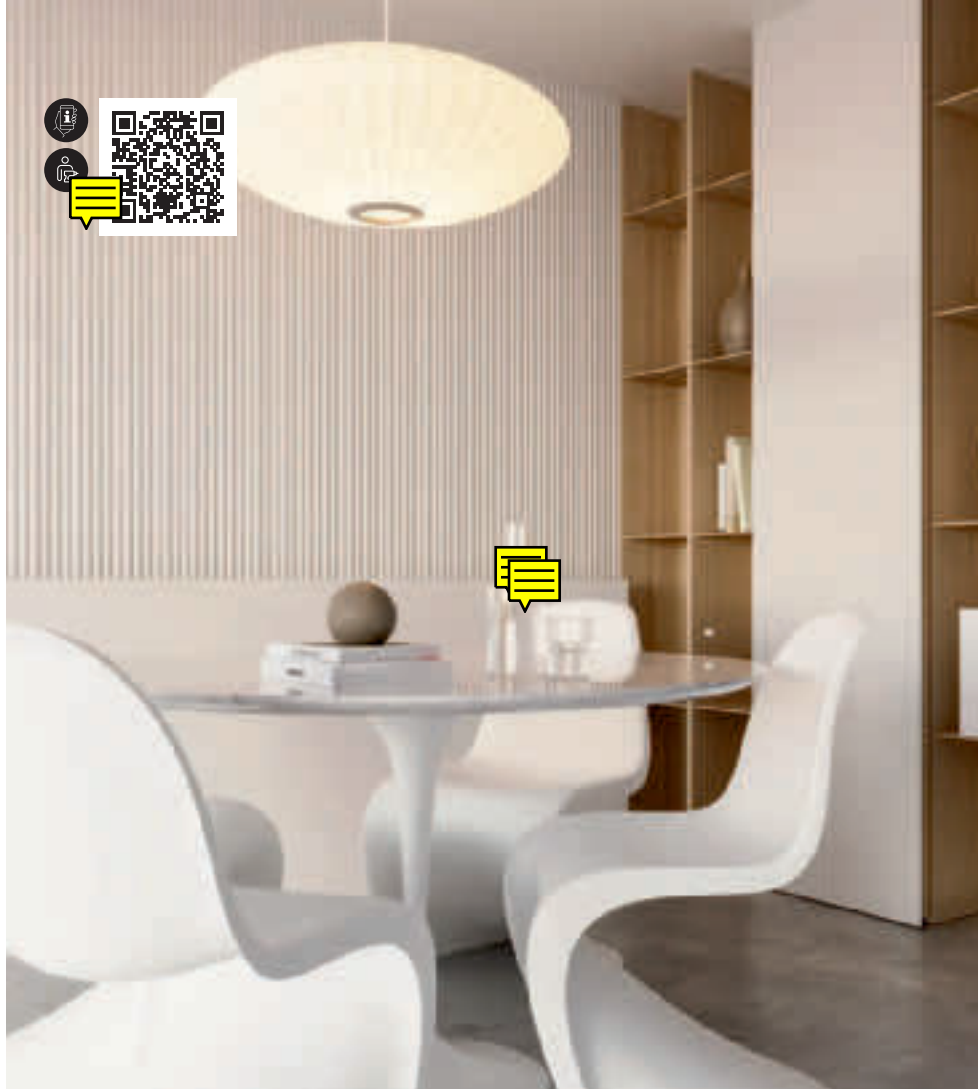


THALIA® 4 XPS



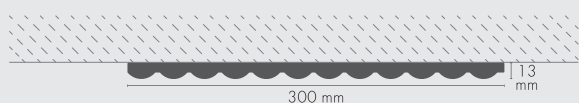
PT04-68						
PT04-68		101	LM	2,0 m	853586	16





LUMINO

PU



PSLUM300KX



PSLUM300KX



BI

BM

2,7 m

845895

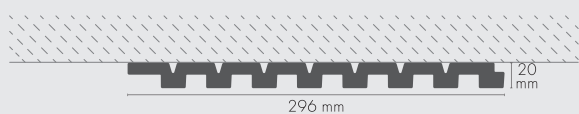
10





LAVENO

PU



PSLAV300KX



PSLAV300KX



BI

BM



845871

10



Panele ściennie/ Wall panels/ Wandpaneele

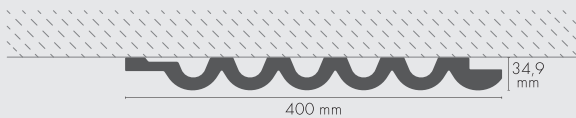
75

Cezar



LUGANO

PU



PSLUG400KX



PSLUG400KX

BI

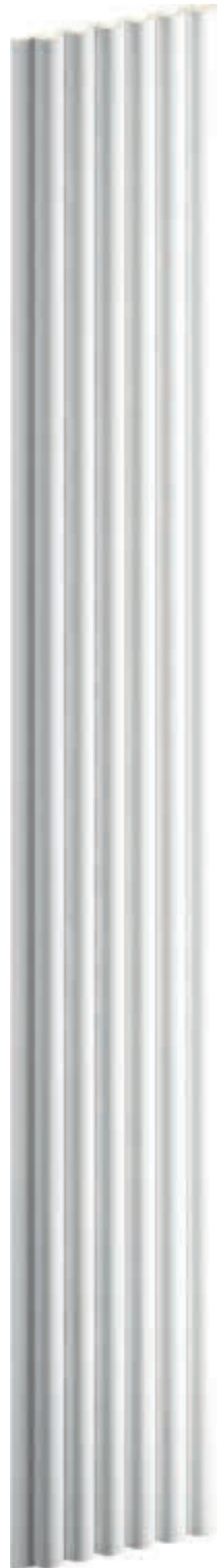
BM

2,6 m

845888

10

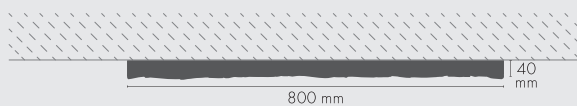
Panele ścienne/ Wall panels/ Wandpaneele





SANTERO H1

PU



PSSAH1800KX



PSSAH1800KX



BI

BM

800 x 2600 x 40 mm

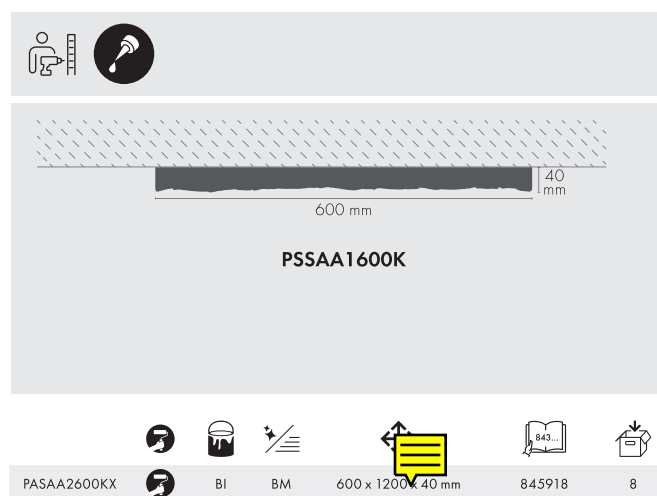
845925

4





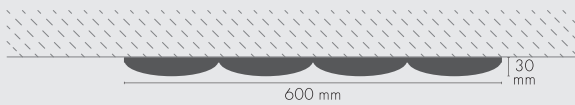
SANTERO A2 PU





MODENA

PU



PSMO600MU



PSMO600MU



600 x 600 x 30 mm

842771

10





TRENTO

PU

600 mm 30 mm

PSTR600MU

PSTR600MU								
	BI	BM	600 x 600 x 30 mm	842795	10			



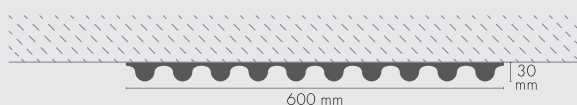
Panele ścienne / Wall panels / Wandpaneele

81



TREVI

PU



PSTV600MU



PSTV600MU



BI

BM

600 x 600 x 30 mm

842801

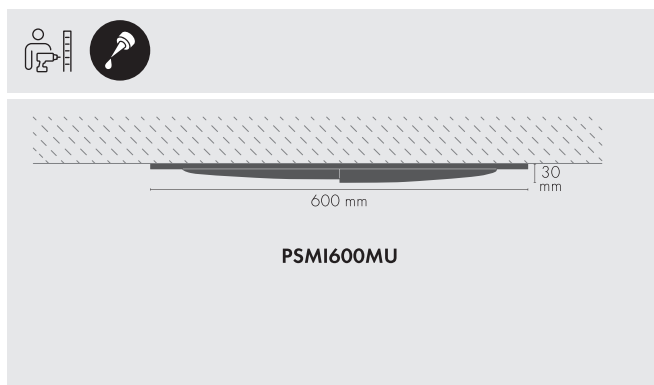
10





MILANO

PU



PSMI600MU	BI	BM	600 x 1200 x 40 mm	842764	10
-----------	----	----	--------------------	--------	----



Panele ścienne / Wall panels / Wandpaneele

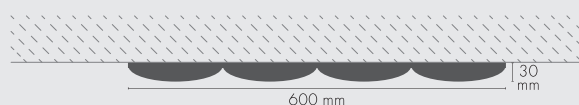
83

Cezar



TORINO

PU



PSTO600MU



PSTO600MU

BI

BM

600 x 600 x 30 mm

842788

10



R13/ 101

KDS-13/ 101

KDS-09/ 101

LGG-02/ 101



KDS-09/ 101

LPC-25/ 101

DEKORACJE DECORATIONS DEKORATIONEN

OBRAMOWANIA DRZWI I OKIEN

DOOR AND WINDOW FRAMES

TÜREN UND FENSTERRAHMEN

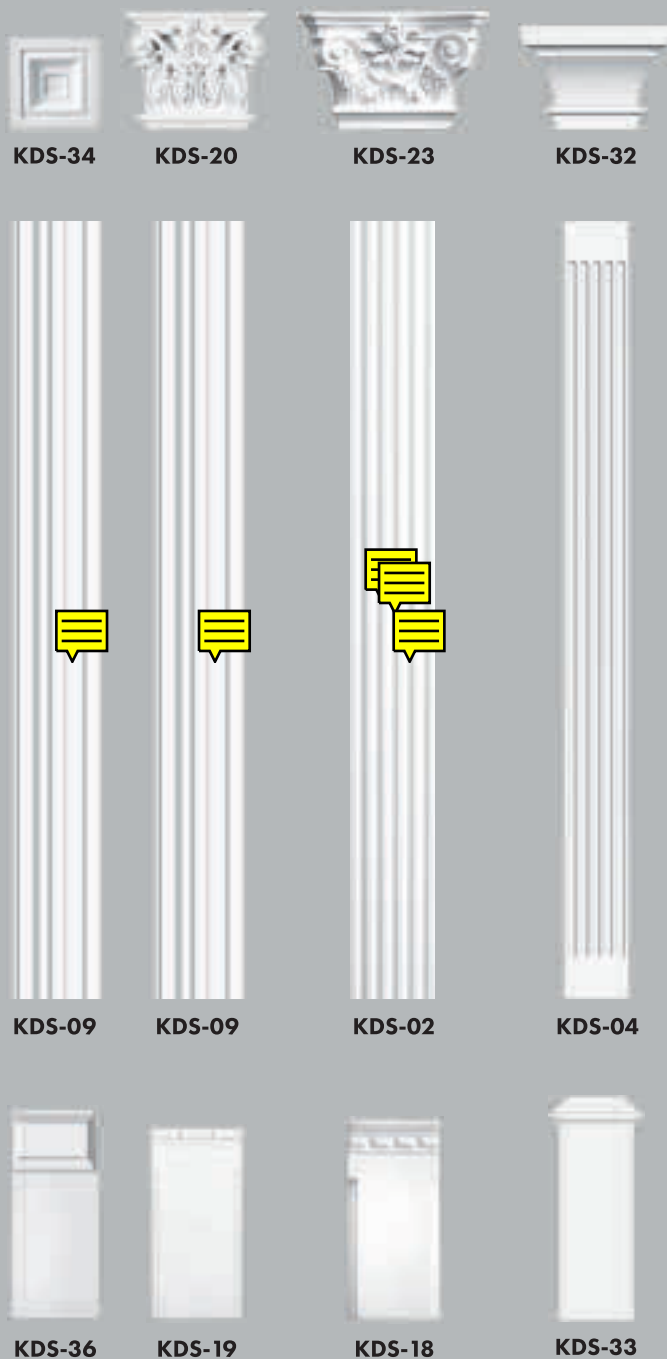
PU



KDS-02		101	S	2000 x 130 x 15 mm	880827	35
KDS-04		101	S	2200 x 170 x 22 mm	880841	5
KDS-05		101	S	2400 x 93 x 32 mm	880858	32
KDS-06		101	S	2000 x 250 x 30 mm	880865	5
KDS-07		101	S	2000 x 180 x 25 mm	880872	10
KDS-08		101	S	2000 x 320 x 30 mm	880889	5
KDS-09		101	S	2400 x 97 x 22 mm	880896	31
KDS-14		101	S	255 x 295 x 88 mm	880964	5
KDS-15		101	S	450 x 200 x 37 mm	880971	5
KDS-16		101	S	425 x 550 x 190 mm	880988	5
KDS-17		101	S	530 x 380 x 55 mm	880995	5
KDS-18		101	S	300 x 140 x 33 mm	881008	5
KDS-19		101	S	300 x 114 x 33 mm	881015	50
KDS-20		101	S	145 x 130 x 45 mm	881022	5
KDS-21		101	S	446 x 182 x 67 mm	881039	5
KDS-22		101	S	335 x 158 x 71 mm	881046	5
KDS-23		101	S	135 x 215 x 55 mm	881053	5
KDS-24		101	S	295 x 165 x 43 mm	881060	5
KDS-30		101	S	250 x 95 x 40 mm	881138	50
KDS-32		101	S	330 x 224 x 102 mm	881152	5
KDS-33		101	S	310 x 74 x 89 mm	881169**	5
KDS-34		101	S	97 x 97 x 30 mm	881176	90
KDS-35		101	S	97 x 97 x 40 mm	881183	70
KDS-36		101	S	233 x 95 x 30 mm	881190	50

Dekoracje/ Decorations/ Dekorationen

86





KDS-14



KDS-16



KDS-21



KDS-35



KDS-05



KDS-34



KDS-07



KDS-08



KDS-06



KDS-05



KDS-05



KDS-15



KDS-17



KDS-22



KDS-30






KDS-24
















KDS-30

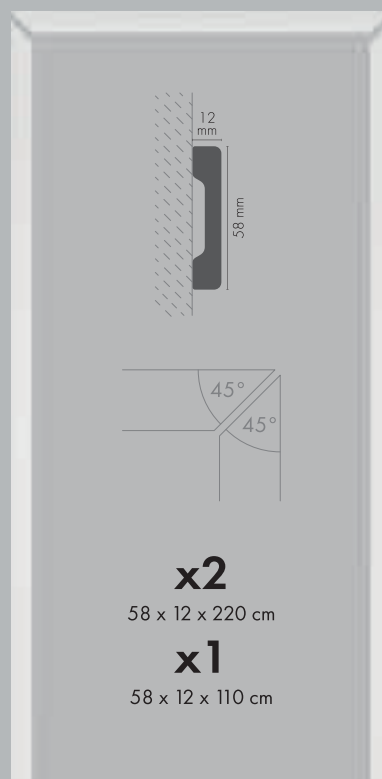
OBRAMOWANIA DRZWI I OKIEN DOOR AND WINDOW FRAMES TÜREN UND FENSTERRAHMEN

XPS

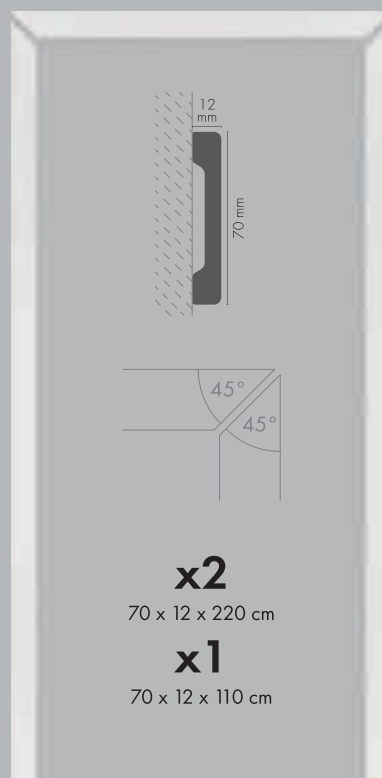
LPC-32		101	LM		621338**	12
LPC-37		101	LM	2,2m	621345**	12

PU

KDS-01		101	S		2400 x 130 x 21 mm	880810	10
KDS-03		101	S		2160 x 165 x 70 mm	880834	10
KDS-05		101	S		2400 x 93 x 32 mm	880858	32
KDS-10		101	S		1265 x 195 x 30 mm	880902	10
KDS-13		101	S		1175 x 360 x 60 mm	880957***	5
KDS-25		101	S		155 x 115 x 20 mm	881077	5
KDS-28		101	S		320 x 130 x 15 mm	881107	100
KDS-29		101	S		230 x 135 x 30 mm	881114	5
KDS-30		101	S		250 x 95 x 40 mm	881138	50
KDS-31		101	S		110 x 83 x 50 mm	881145	50
KDS-36		101	S		233 x 95 x 30 mm	881190	50
LNG-31		101	LM		2440 x 92 x 22 mm	899164	24



LPC-32



LPC-37



KDS-10



KDS-28



KDS-29



KDS-25

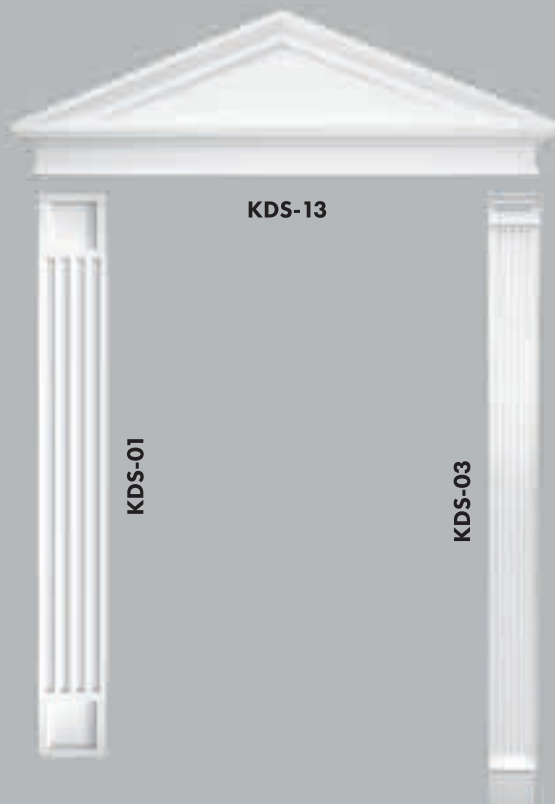


KDS-10 + KDS-26

KDS-10 + KDS-28

KDS-10 + KDS-29

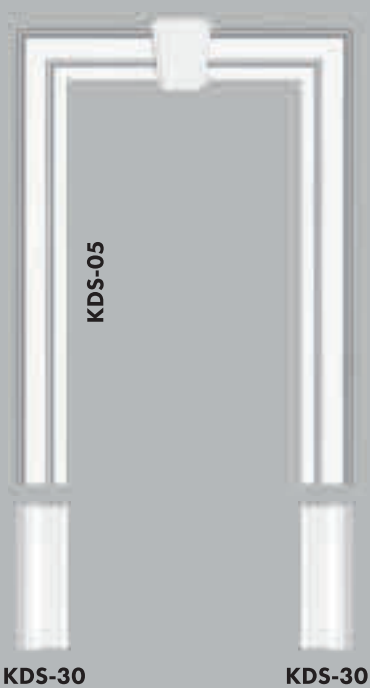
KDS-10 + KDS-25



KDS-13

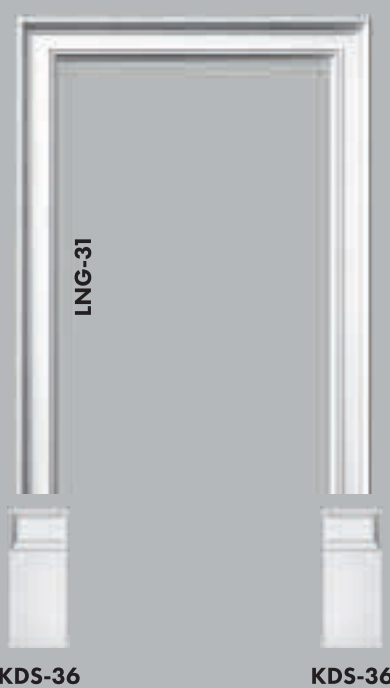
KDS-01

KDS-03



KDS-30

KDS-30

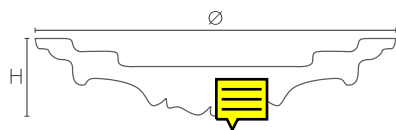


KDS-36

KDS-36

DEKORACJE SUFITOWE CEILING ORNAMENTS DECKENDEKORATIONEN

PU



R-03		101	S	77,5 x 510 mm/ H 40 mm	880520	10
R-04		101	S	ø 648 mm/ H 100 mm	880537	1
R-08		101	S	ø 380 mm/ H 45 mm	880612	10
R-09		101	S	ø 375 mm/ H 44 mm	880636	15
R-10		101	S	ø 460 mm/ H 38 mm	880643**	20
R-11		101	S	ø 485 mm/ H 41 mm	880650	10
R-12		101	S	ø 620 mm/ H 41 mm	880667	10
R-13		101	S	ø 740 mm/ H 38 mm	880674	12
R-14		101	S	ø 600 mm/ H 70 mm	880681	10
R-15		101	S	ø 690 mm/ H 65 mm	880698	5
R-16		101	S	ø 775 mm/ H 40 mm	880704	15
R-18		101	S	ø 610 mm/ H 75 mm	880773	5
R-19		101	S	ø 830 mm/ H 50 mm	880551	5
R-20		101	S	ø 460 mm/ H 45 mm	880599	10
R-21		101	S	ø 600 mm/ H 82 mm	880605	10
R-22		101	S	ø 950 mm/ H 113 mm	861093	5
R-23		101	S	ø 510 mm/ H 30 mm	861109	5
R-24		101	S	ø 535 mm/ H 34 mm	861130	15
R-25K		101	BM	ø 246 mm/ H 30 mm	839856	20
R-26K		101	BM	ø 305 mm/ H 30 mm	839863	15
R-27K		101	BM	470 x 345 mm/ H 80 mm	840340	5
R-28K		101	BM	ø 475 mm/ H 35 mm	840357	5
R-29K		101	BM	ø 495 mm/ H 45 mm	840364	10
R-30K		101	BM	ø 559 mm/ H 45 mm	840371	5
R-31K		101	BM	ø 762 mm/ H 60 mm	839870	5
R-32K		101	BM	940 x 660 mm/ H 35 mm	839887	5

Dekoracje/ Decorations/ Dekorationen



R-25K

R-26K

R-20

R-28K

R-24

R-30K

R-12

R-15

R-19

R-22



R-09



R-08



R-10



R-11



R-29K



R-23



R-14



R-21



R-18



R-13



R-31K



R-16



R-27K



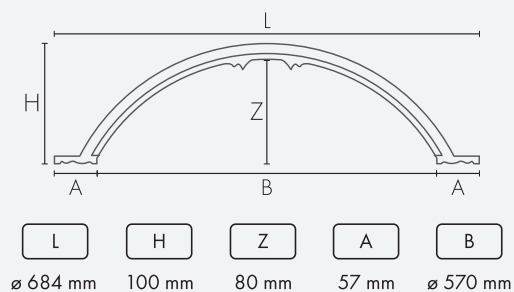
R-03



R-32K



R-04




NISZE NICHES NISCHEN

PU

						
N-01		101	S	600 x 1105 x 190 mm	881299	1


WSPORNIKI BRACKETS STUCKKONSOLEN

PU

						
WG-01		101	S	165 x 95 x 236 mm	880780	5
WG-02		101	S	180 x 90 x 230 mm	880797	5
WG-03		101	S	156 x 120 x 245 mm	880803	10

DEKORACJE DECORATIONS DEKORATIONEN

PU

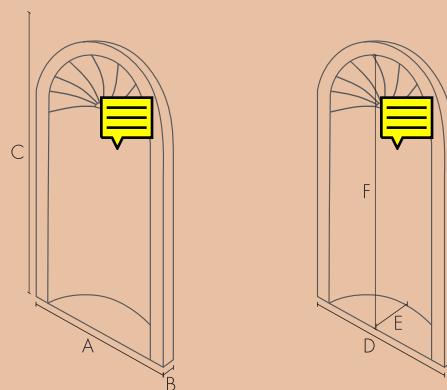
						
O1L		101	S	132 x 70 x 30 mm	881206	30
O1P		101	S	132 x 70 x 30 mm	881213	10
O2L		101	S	173 x 328 x 47 mm	881220	10
O2P		101	S	173 x 328 x 47 mm	881237	10
D-01		101	S	505 x 203 x 170 mm	881244***	2
D-02		101	S	365 x 192 x 377 mm	881251	2
D-03		101	S	365 x 192 x 377 mm	881268	2
D-04		101	S	290 x 183 x 170 mm	881275***	10
D-05		101	S	450 x 150 x 235 mm	881282	4
O-01		101	S	1074 x 540 x 80 mm	881619	5
O-02		101	S	725 x 245 x 70 mm	881626	5
WG-01		101	S	165 x 95 x 255 mm	880780	5
WG-02		101	S	180 x 90 x 230 mm	880797	5
WG-03		101	S	156 x 120 x 245 mm	880803	10



NISZE/ NICHES/ NISCHEN



N-01



A	600 mm
B	190 mm
C	1105 mm
D	450 mm
E	155 mm
F	990 mm

WSPORNIKI/ BRACKETS/ STUCKKONSOLEN



WG-01



WG-02



WG-03

DEKORACJE/ DECORATIONS/ DEKORATIONEN



O1L



O1P



D-03



O2L



O2P



D-02



D-01



D-04



D-05



O-01



O-02

KOLUMNY COLUMNS DECORSÄULEN

PU

K224		101	S	2000 x 240 mm	881510***	2
K224-C		101	S	2000 x 240 mm	881541***	1
K230		101	S	2000 x 300 mm	881558***	2
K230-C		101	S	2000 x 300 mm	881565***	1
K324		101	S	2000 x 240 mm	881572	2
K324-C		101	S	2000 x 240 mm	881589***	1
K330		101	S	2000 x 300 mm	881596	2
K330-C		101	S	2000 x 300 mm	881602***	1
KG124-1		101	S	385 x 120 mm	881350***	2
KG124-1C		101	S	385 x 120 mm	881367***	1
KG124-2		101	S	430 x 205 mm	881374***	2
KG124-2C		101	S	430 x 205 mm	881381***	1
KG124-3		101	S	410 x 360 mm	881398	2
KG124-3C		101	S	410 x 360 mm	881404***	1
KG130-1		101	S	425 x 170 mm	881411***	2
KG130-1C		101	S	425 x 170 mm	881428***	1
KG130-2		101	S	535 x 240 mm	881435***	2
KG130-2C		101	S	535 x 240 mm	881442***	1
KG130-3		101	S	480 x 365 mm	881459	2
KG130-3C		101	S	480 x 365 mm	881466***	1
KG224-4		101	S	440 x 160 mm	881473	2
KG224-4C		101	S	440 x 160 mm	881480***	1
KG230-4		101	S	515 x 200 mm	881497	2
KG230-4C		101	S	515 x 200 mm	881503***	1



K224 K324



KG224-4 KG224-4



K230

K330



KG230-4

KG230-4

AKCESORIA MONTAŻOWE INSTALLATION ACCESSORIES MONTAGEZUBEHÖR



SUPER MOCNY KLEJ DO SZYBKIEGO MONTAŻU SUPER-STRONG ADHESIVE FOR QUICK INSTALLATION SUPERSTARKER KLEBSTOFF FÜR SCHNELLE MONTAGE

Klej na bazie polimeru hybrydowego do kamienia naturalnego, drewna, betonu, metalu, cegły, szkła, ceramiki, tynku, poliuretanu, tworzyw sztucznych, płyty wiórowej.

Hybrid polymer-based adhesive for natural stone, wood, concrete, metal, brick, glass, ceramics, plaster, PU, plastics, and chipboard.

Hybridklebstoff auf Polymerbasis für Naturstein, Holz, Beton, Metall, Ziegel, Glas, Keramik, Gips, Polyurethan, Kunststoff, Spanplatten.



290 ml



653469



15



KLEJ MONTAŻOWY ASSEMBLY ADHESIVE MONTAGEKLEBER

Klej do drewna, kamienia, ceramiki, tworzyw sztucznych (z wyjątkiem PE i PP) oraz metali na podłożach budowlanych.

An adhesive suitable for wood, stone, ceramics, plastics (except PE and PP) and metals on building substrates.

Kleber für Holz, Stein, Keramik, Kunststoffe (außer PE und PP) und Metalle auf Bauuntergründen.



300 ml



881671



15



SZYBKOSCHNĄCY KLEJ DO ŁĄCZEŃ QUICK-DRYING JOINT ADHESIVE SCHNELLTROCKNENDER FUGENKLEBER

Klej poliuretanowy do większości materiałów budowlanych z wyjątkiem (z wyjątkiem PE i PP), również wilgotnych.

Polyurethane adhesive for most construction materials with the exception of PE and PP, also on wet substrates.

Polyurethan-Klebstoff für die meisten Baumaterialien (mit Ausnahme von PE und PP), auch für nasse Materialien.



300 ml



881688



15



GOTOWA MASA SZPACHLOWA DO SZTUKATERII READY-TO-USE JOINT COMPOUND FOR STUCCO GEBRAUCHSFERTIGE FUGENMASSE FÜR STUCKARBEITEN



330 g



808395



12

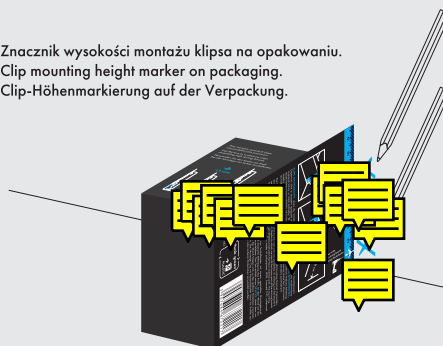
KLIPSY MONTAŻOWE INSTALLATION CLIPS MONTAGECLIPS



LPC-50, LPC-51, LPC-52, Elegance® Decor



Znacznik wysokości montażu klipsa na opakowaniu.
Clip mounting height marker on packaging.
Clip-Höhenmarkierung auf der Verpackung.



672217



25



36

KLIPS MONTAŻOWY INSTALLATION CLIPS MONTAGECLIP



LPC-16

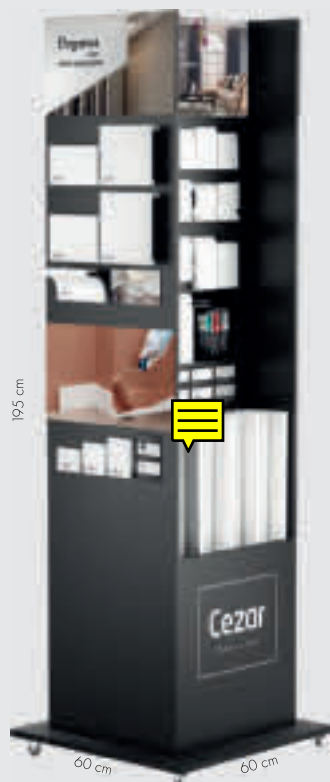


899102

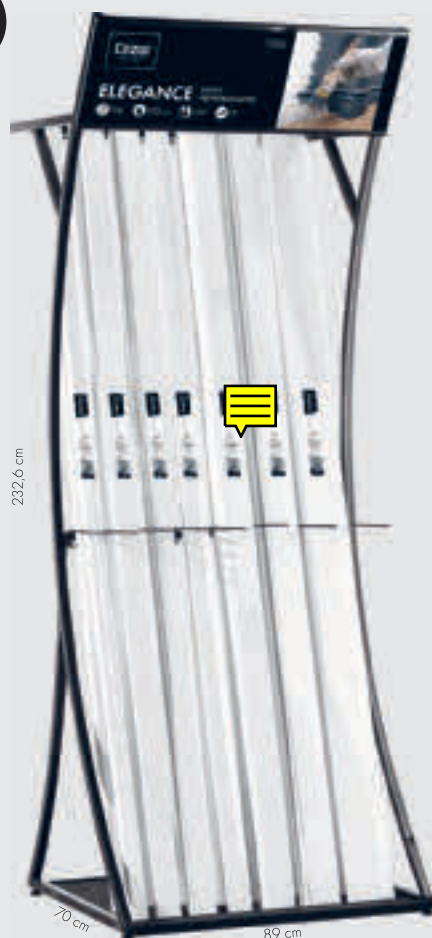


5000

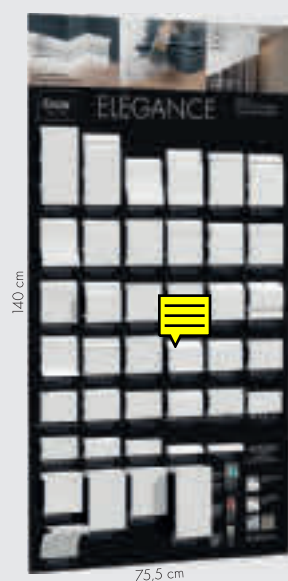
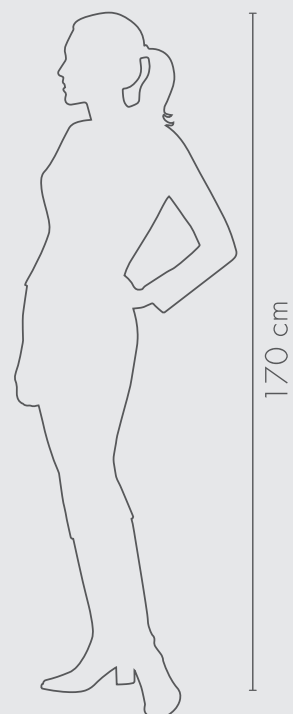
**EKSPOZYTORY
DISPLAYS
VERKAUFSDISPLAYS**



W-RE-S-EX-EL-ML-MD-PL
ELEGANCE®



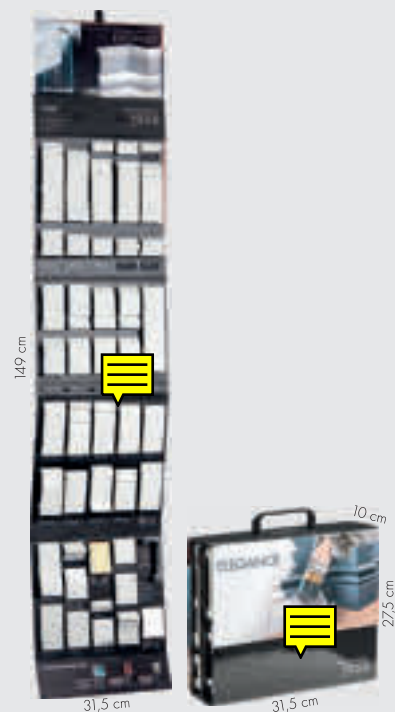
AT-RE-ST-L8907002326EL
ELEGANCE®
7 pozycji, regulowane separatory
7 positions, adjustable separators
7 Positionen, verstellbare Trennwände



W-RE-W-TABK1ECE
ELEGANCE®



W-RE-W-LK-EL
ELEGANCE®



W-RE-W-EEN/T
ELEGANCE®

SIEDZIBA W EŁKU OUR HEADQUARTERS IN EŁK HAUPTSITZ IN EŁK

ul. Strefowa 2, 19-300 Ełk, POLAND

+48 87 620 99 00

+48 87 620 43 20

cezar@cezar.eu

DZIAŁ OBSŁUGI KLIENTA/ CUSTOMER SERVICE/ KUNDENDIENST

1

KAMILA CZEKAŁA

Specjalista ds. Sprzedaży i obsługi eksportu
Sales and Export specialist
Spezialist für Verkauf und Abwicklung im Export

+48 87 620 99 91

+48 515 055 760

k.czekala@cezar.eu

2

EDYTA KORCZ-FADROWSKA

Specjalista ds. Sprzedaży i obsługi eksportu
Sales and Export specialist
Spezialist für Verkauf und Abwicklung im Export

+48 87 620 99 05

+48 510 233 012

e.korcza@cezar.eu

3

MACIEJ NOWAKOWSKI

Specjalista ds. Sprzedaży i obsługi eksportu
Sales and Export specialist
Spezialist für Verkauf und Abwicklung im Export

+48 87 620 99 09

+48 513 039 638

m.nowakowski@cezar.eu

RYNEK TRADYCYJNY TRADITIONAL MARKET TRADITIONELLER MARKT

JAROSŁAW KALISZUK

Kierownik Sprzedaży - Polska
Sales Area Manager - Poland
Verkaufsleiter - Polen

+48 510 233 008

j.kaliszuk@cezar.eu

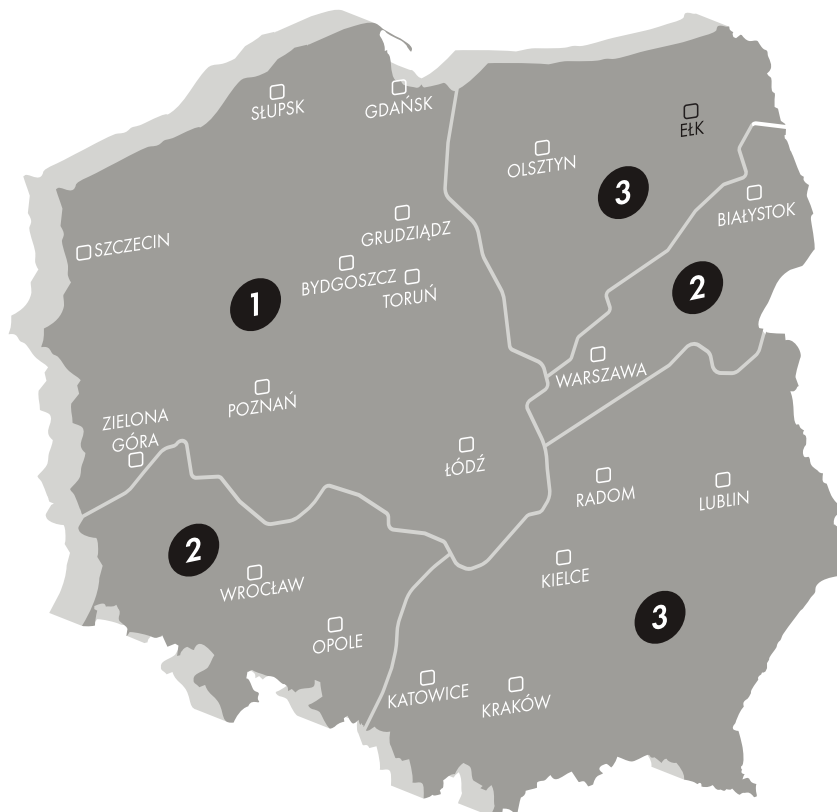
RYNEK NOWOCZESNY MODERN MARKET MODERNER MARKT

KRZYSZTOF RYDZIŃSKI

Dyrektor sprzedaży ds. rynku nowoczesnego
Sales Director - Modern Trade
Vertriebsleiter für den modernen Handel

+48 515 055 732

k.rydzinski@cezar.eu



INWESTYCJE INVESTMENTS INVESTITIONEN

ENG

EWA SZCZYGIELSKA

Kierownik Sprzedaży ds. rynku inwestycyjnego
Investment Market Sales Manager
Verkaufsleiter für den Investitionsmarkt

+48 505 334 337

e.szczygieska@cezar.eu

EKSPORT EXPORT EXPORT

FR

ENG

RENATA KOZŁOWSKA

Dyrektor Eksportu
Export Director
Exportdirektor

+48 87 620 97 09

+48 501 329 631

r.kozlowska@cezar.eu

ENG

RUS

INNA POLYAKOVA

Zastępca Dyrektora Eksportu
Deputy Export Director
Stellvertretender Exportdirektor

+48 87 620 99 16

+48 695 830 010

i.polyakova@cezar.eu